



# RÉPARTITION DES NAVIRES EN ACTIVITÉ PAR ZONE TARIFAIRE EN 2020

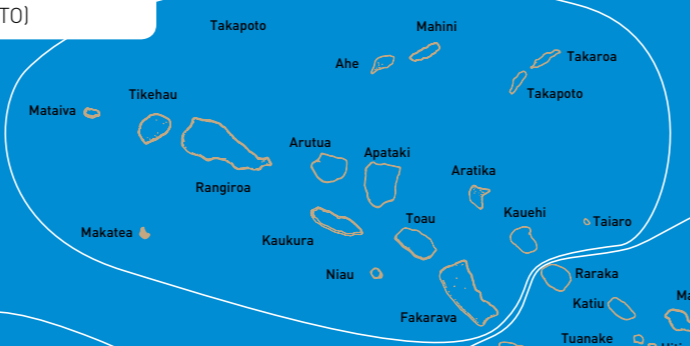


- PAPEETE - ÎLES-SOUS-LE-VENT**
- HAWAIKI NUI
  - TAPORO 6
  - TAPORO 7
  - ARANUI 5 (BORA BORA)
- INTER - ÎLES-SOUS-LE-VENT**
- TE HAERE MARU 6
  - TE HAERE MARU EXPRESS 7
  - MAUPITI EXPRESS 2
  - TERE ORA ITI



## ÎLES DE LA SOCIÉTÉ

- TUAMOTU OUEST**
- COBIA 3
  - DORY
  - MAREVA NUI
  - ST X MARIS STELLA 4
  - ARANUI 5 (FAKARAVA-RANGIROA)
  - TAPORO 9 (TAKAPOTO)



## TUAMOTU

- MOOREA**
- AREMITI 6
  - AREMITI FERRY 2
  - TEREVAU
- MAIAO**
- TAPORO 8
  - TAPORO 9



- TUAMOTU CENTRE**
- COBIA 3 (FAAITE, KATIU)
  - MAREVA NUI (MAKEMO)
  - SAINT XAVIER MARIS STELLA 3
  - ST X MARIS STELLA 4 (HAO, AMANU)
  - NUKU HAU
  - TAPORO 8

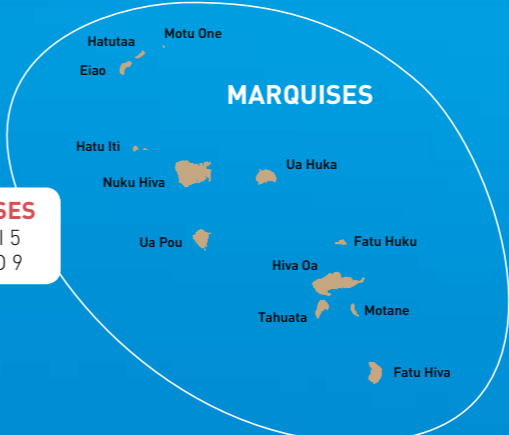


- AUSTRALES**
- TUHAA PAE 4



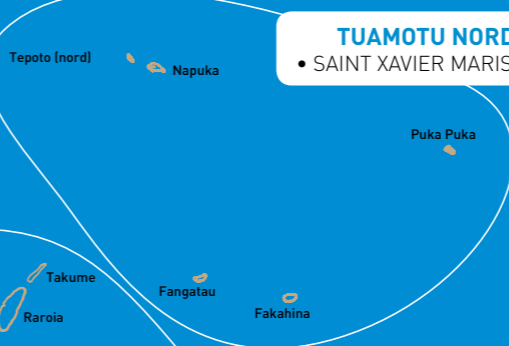
## AUSTRALES

- MARQUISES**
- ARANUI 5
  - TAPORO 9



## MARQUISES

- TUAMOTU NORD-EST**
- SAINT XAVIER MARIS STELLA 3



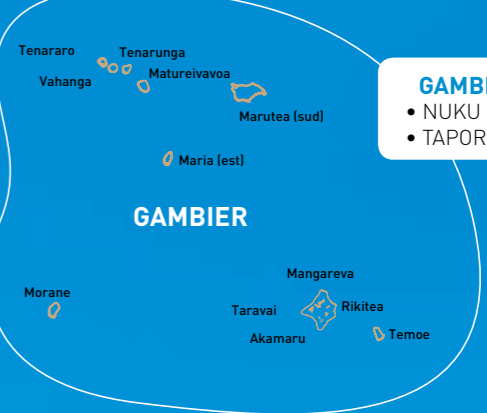
## TUAMOTU NORD-EST

- TUAMOTU EST**
- NUKU HAU
  - SAINT XAVIER MARIS STELLA 3
  - TAPORO 8



## TUAMOTU EST

- GAMBIER**
- NUKU HAU
  - TAPORO 8

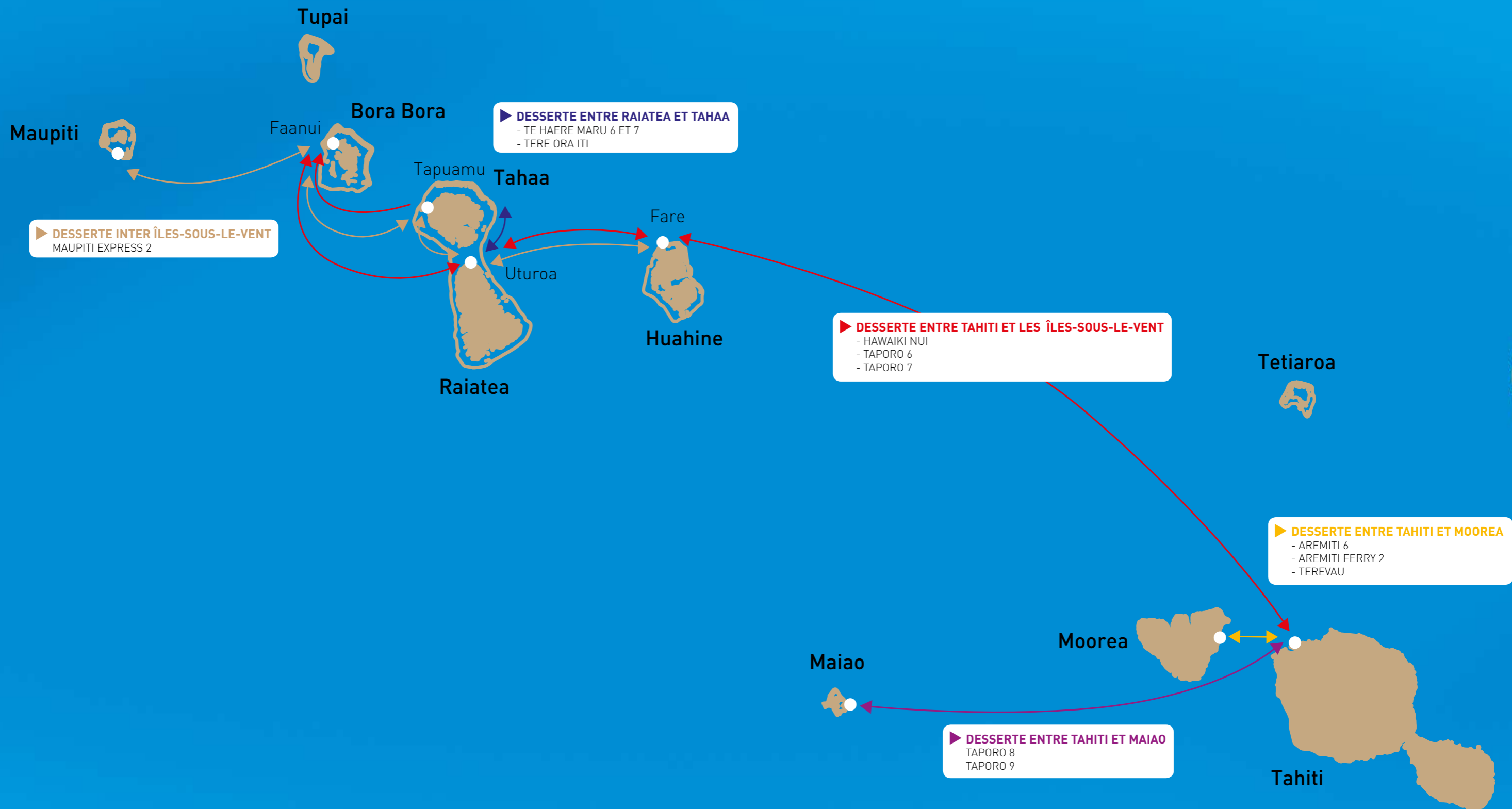


## GAMBIER



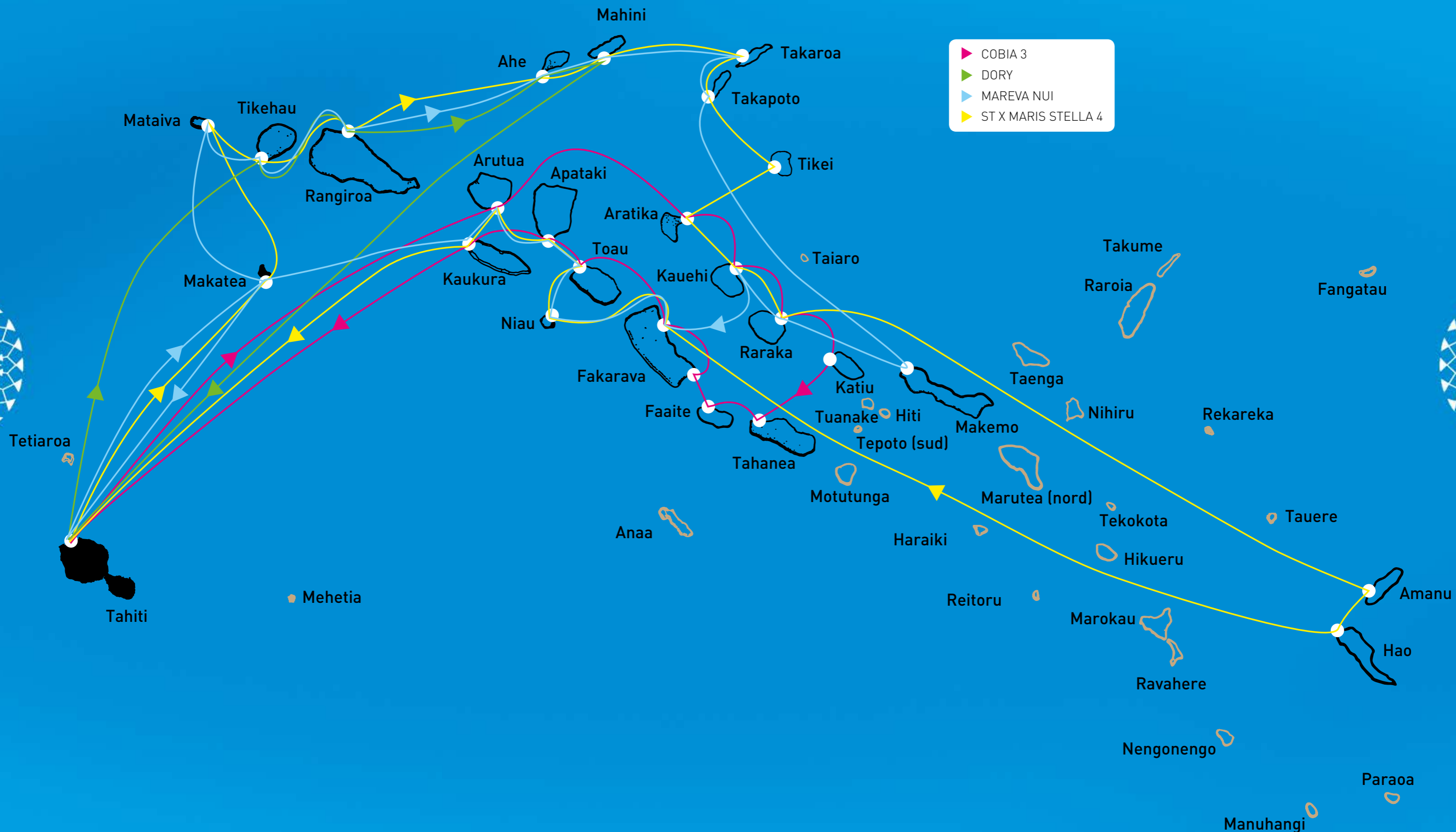


# LES LIGNES MARITIMES DE L'ARCHIPEL DE LA SOCIÉTÉ





# LES LIGNES MARITIMES DES TUAMOTU OUEST





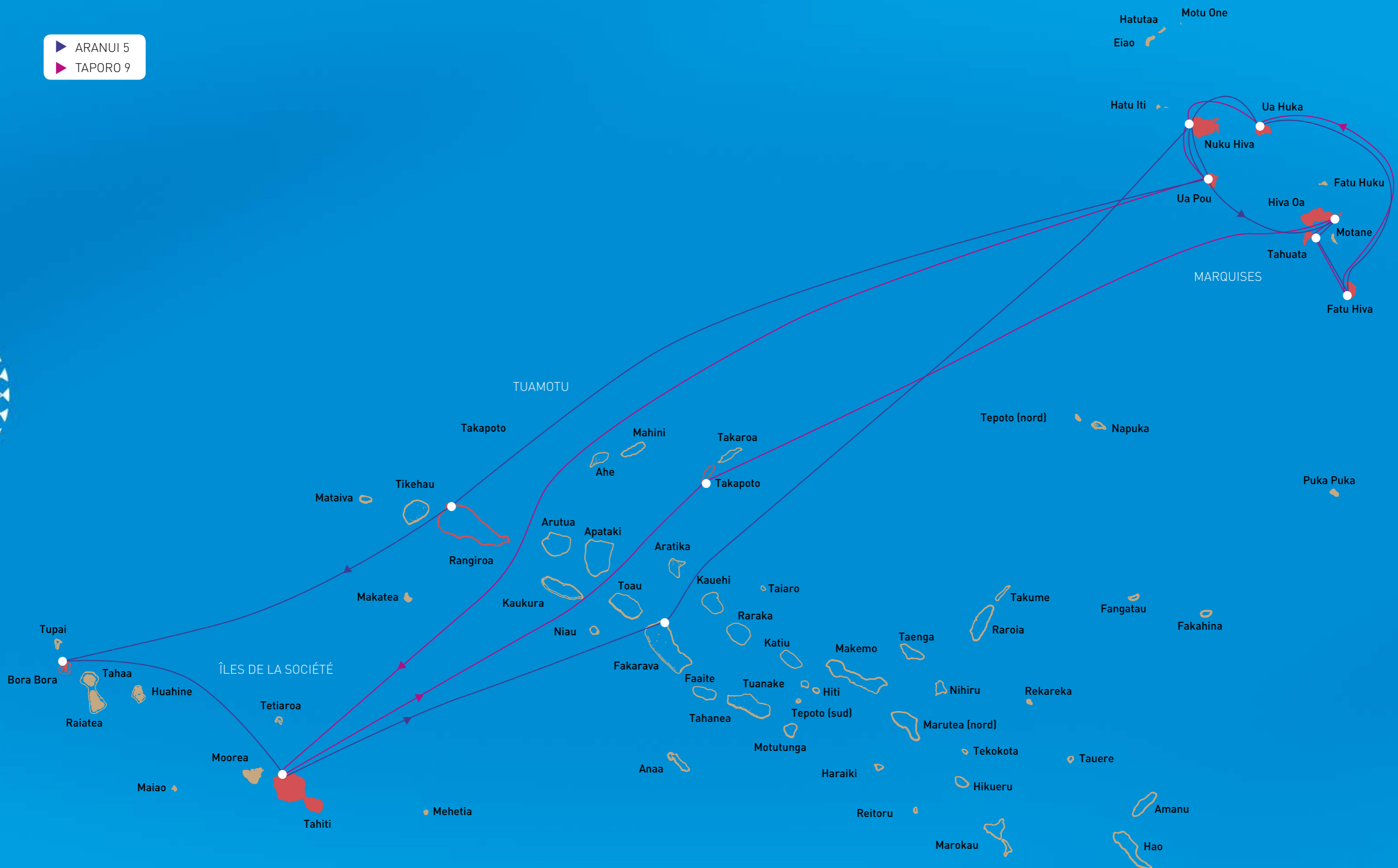
# LES LIGNES MARITIMES DES TUAMOTU CENTRE, EST, NORD-EST ET GAMBIER





# LES LIGNES MARITIMES DES MARQUISES

- ▶ ARANUI 5
- ▶ TAPORO 9





# LES LIGNES MARITIMES DES AUSTRALES

▶ TUHAA PAE 4

