

TE MAU NŪMERA FAUFA'A NO TE ITO I PŌRĪNETIA I TE MATAHITI 2022



92,5 % Fāito 'aimama*
377 MIRIONI rītera mōrī 'ārahu e poro'ihia ra i rāpae

'Aira'a ito* 'ini'ini tahito
334 800 tep*

- 54 %** Utara'a
- 36 %** Hāmanira'a ito
- 5 %** Ahu
- 2 %** Ha'aputura'a
- 3 %** Tautai e te Fa'a'apu pārau

217 MIRIONI

I 'aihia e te tuha'a 'ohipa utara'a

O te utara'a nā ni'a i te purūmu te 'ai rahi nei te ito

40 %



Purūmu
74 %



Pahī
17 %



Manureva
9 %



116 MIRIONI

rītera mōrī 'ārahu e 'aihia ra no te hāmanira'a i te ito

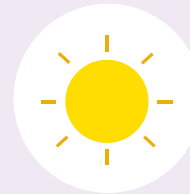


Mōrī 'ārahu
436,0 GWh

116 mirioni rītera



Pape
194,4 GWh

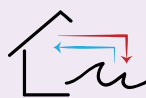


Mahana - PV
49,9 GWh

Fāito ito hou EnR i roto i te tā'ato'ara'a o te pu'e ito

36 %

Fāito ito hou e riro i te ha'amāmā i te hāmanira'a ito - **3,7 %** i te matahiti 2022 :



SWAC*
17,6 GWh



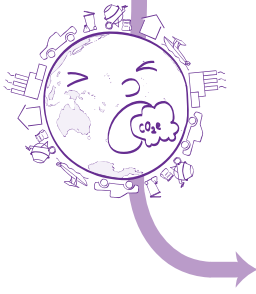
CES*
23,6 GWh



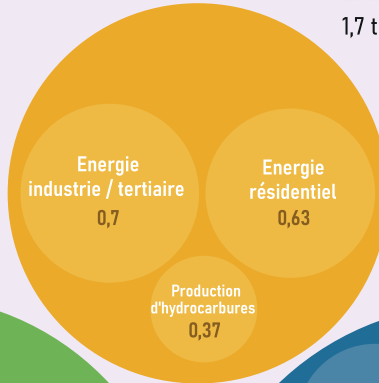


'Ahu'i 'ārahu* i te matahiti 2021

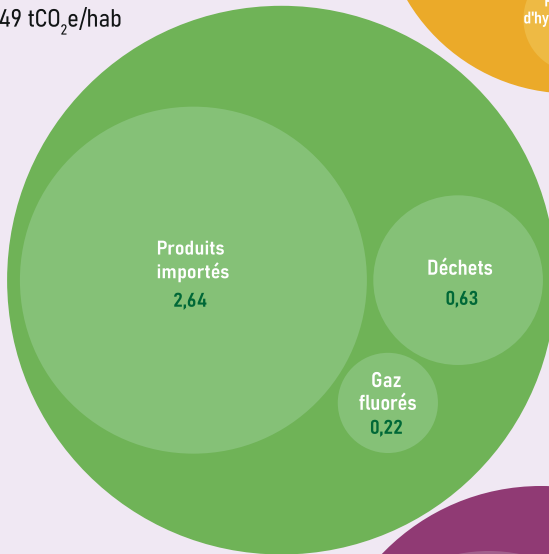
10,6 tCO₂e/hab



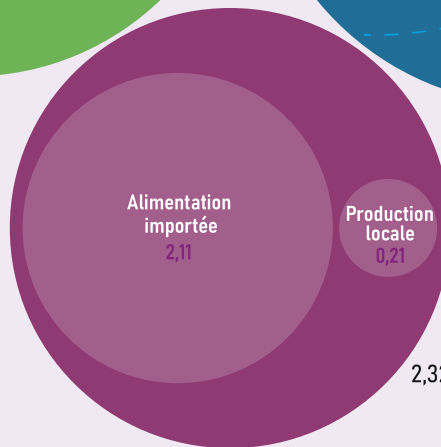
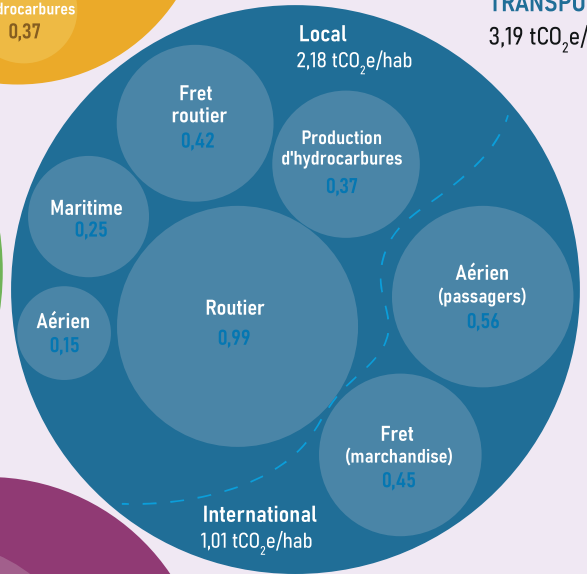
ENERGIE
1,7 tCO₂e/hab



CONSOMMATION
3,49 tCO₂e/hab



TRANSPORT
3,19 tCO₂e/hab



ALIMENTATION
2,32 tCO₂e/hab

40 %

O te 'āhu'i 'ārahu i fa'atupuhia i te fenua iho nei i te



Fāito 'aimama ito : Fāito e poro'ihia e te hōē fenua no tā na mau 'ohipa

Aira'a ito 'ārahu : Tā'ato'ara'a o te mau tao'a ito i 'ore i fa'ahuru'āhia, tei fa'āhipa-ti'a-hia aore ra o teie poro'ihia no te 'aira'a ito i te fenua nei

tep - tane fa'āauhia i te mōri'ārahu : Fāito fa'āauhia no te fa'atitī'aifarora'a i te hāmanira'a e te 'aira'a ito

SWAC - Sea Water Air Conditioning : Fa'anahora'a o te fa'āhipa nei i te miti to'eto'e 'ei rāve'a fa'ahaumārūra'a i te mau piha fare

CES - Chauffe-eau solaire : Fa'anahora'a tunura'a pape i te ito mahana

Ha'apararera'a ti'a (io te fenua iho ei) : Te mau pararera'a māhu pahu tāpo'i ra'i i fa'atupuhia i te fenua nei

'Āhu'i 'ārahu : Te teimaha ha'avi'ivi'i o tā tātou mau ha'ara'a i ni'a i te arutaimāreva