

# Kura Ora !



## Fakarava

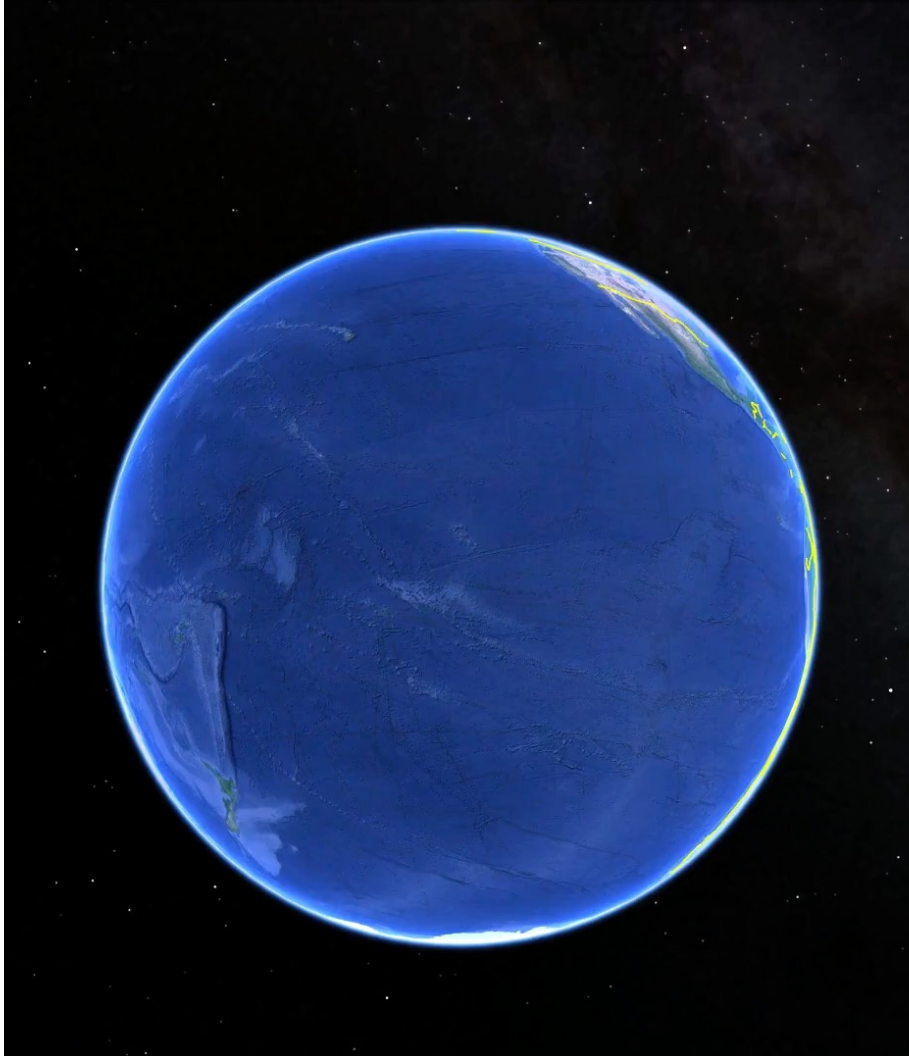
Information for yachties



Service  
du  
Tourisme







# Summary

- General information
- Practical advice and **recommendations**
- Sailing & **anchorages** in Fakarava
- Other atolls nearby

A photograph of a man standing on the white deck of a boat, looking out at a vast blue ocean under a bright blue sky with scattered white clouds. In the distance, a lush green island with palm trees is visible. The boat's railing and a diagonal support pole are visible in the foreground. The image is framed by a dark border with decorative white dotted lines and orange dashed lines.

# General information



## Fakarava in the Tuamotu

A fragile atoll,  
A biosphere reserve combining feelings of immensity and intimacy.  
950 inhabitants to respect.

# The tourism committee

Ph. 40 98 42 46

Mob. 89 66 06 56

Nicolas 87 09 03 33

Tepoe 87 03 33 55

Belinda 87 03 33 14

VHF 68

ctfakarava@gmail.com

✈ The committee

Located on the Rotoava quay, the tourism office is open Monday to Friday from 8 am to 12 pm

Run by **volunteers** and offers a free **Wi Fi** connection

Information's on the activities available:  
the arrival of supply ships, local events and markets,  
environmental protection associations  
to participate in their actions...

The committee guides you according to your needs  
and expectations. It is the **recommended contact**.

Get from them the marine chart of anchorages in  
Fakarava as well as the associated sailors' briefing.





# Maritime heritage

The **Tokapa lighthouse** is located north of Fakarava.

Built in February 1957, it served as a visual landmark day and night for fishermen and boaters. It is made of coral stones and cement, measures 14.20 m in height and has 10 tiers.

The old **Taputavaka lighthouse**, built 80 years ago, is located in the village of Rotoava, on the ocean side behind the town hall. It is built with blocks of coral joined with limestone.

**Ancient rori** (sea cucumber) **ovens** are located near the northern pass.



# General amenities and services in Rotoava

- 4 food stores
- Bakery
- Air Tahiti Agency
- OPT Agency
- Infirmary
- Church
- **Hairdresser** (can come directly on board)
- **Snack Rotoava grill** and **Toa Pizza** in the village
- **Hinariki Lounge** on the dock
- **Snack of the sleeping shark** at the **Havaiki pension**
- And 4 other snacks

The atoll is supplied every 7 to 10 days with schooners..  
**Few fruits, vegetables and fresh produce on site.**  
Plan or book in advance.  
Leave some to the locals.

✈️ **Recommandations**





# Public services *for yachties*

Ph. 40 93 40 40

fakarava@sivmtg.pf //  
communedefakarava@mail.pf

🚢 La mairie (Town Hall)

On your arrival you must go to the Fakarava Town Hall to pay the mandatory taxes:

- 1000 XPF/week\* for the **waste** collection sorted by you
- 60 XPF/day/person\* **tourist tax**
- And if you want **fresh water**, you can buy it from the townhall (5XPF/L\*).  
In the Tuamotu, **fresh water is precious**.  
Don't waste it.

\* Indicative amount



# Yacht services

Ph. 87 75 34 84

VHF 77

[www.fakayachtservices.com](http://www.fakayachtservices.com)

[fakayachtservices@gmail.com](mailto:fakayachtservices@gmail.com)

✈ Fakarava Yacht Services

Laundry, internet & bureautics, parcel reception, **gas**, transfers, small mechanical repairs, bicycle and electric bike & e-scooter rental, sail/upholstery repair.  
Open Monday to Saturday, 8 am to 5 pm

The only marine fuel station in the Tuamotu Islands is in Rotoava.  
Dock with 3 m draft at low tide and 4 m at high tide.  
Closed from noon to 3 pm  
Anna: Ph. 40 98 40 11







# Practical tips & recommendations



## Responsible cruisers

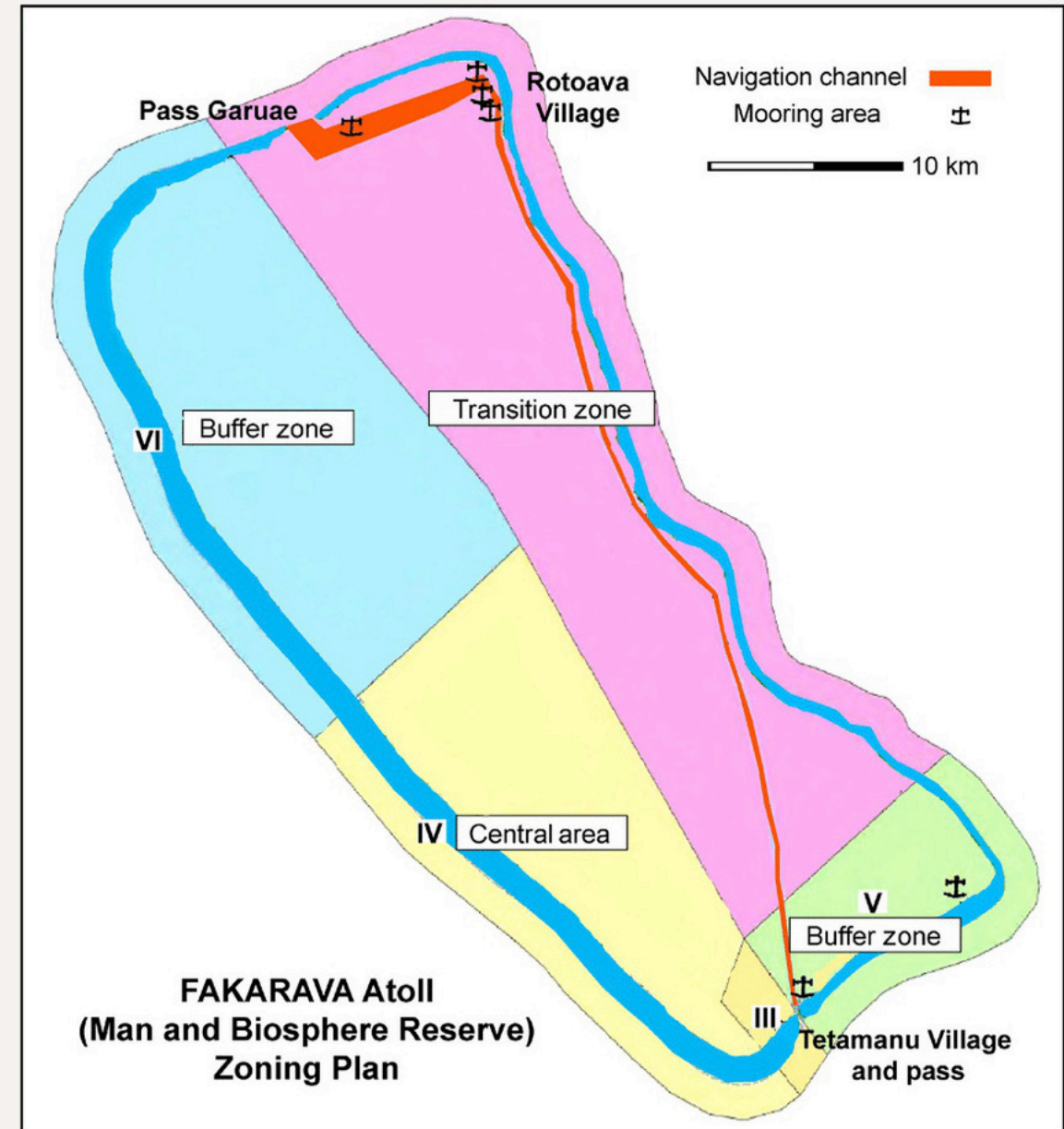
Your behaviour is important.

The welcome given to cruisers in the islands, atolls, and motu depends on our **ability to adapt** and **respect** the people living there.

# We have to respect



- Classified as a Biosphere Reserve by **UNESCO**, the commune of Fakarava is a model of nature preservation, reconciled with human development. It includes 7 low islands and atolls: Aratika, Fakarava, Kauehi, Niau, Raraka, Taiaro, and Toau.
- By integrating a recognized international network, the preservation and promotion of natural and cultural heritage, ancestral heritage, are at the heart of the concerns of the island's inhabitants.
- The development of the islands, tourism and the exploitation of natural resources, must be sustainable and exemplary. Visitors must follow these rules.





# We need to respect

- **Correct attire required** in the village, at church, when visiting, etc.
- **No lighting under the boat** at night, so as not to disturb the underwater fauna/wildlife
- **No campfire** on land or on motu
- **No pollution of lagoons**, waste, liquid discharges, gray water, sun creams, etc.
- **No overfishing**, only take what you can consume
- **No illegal AirBnb/charters** on passing sailboats
- **No nudity at anchor**, ashore, or even while showering on deck!

# Let's share

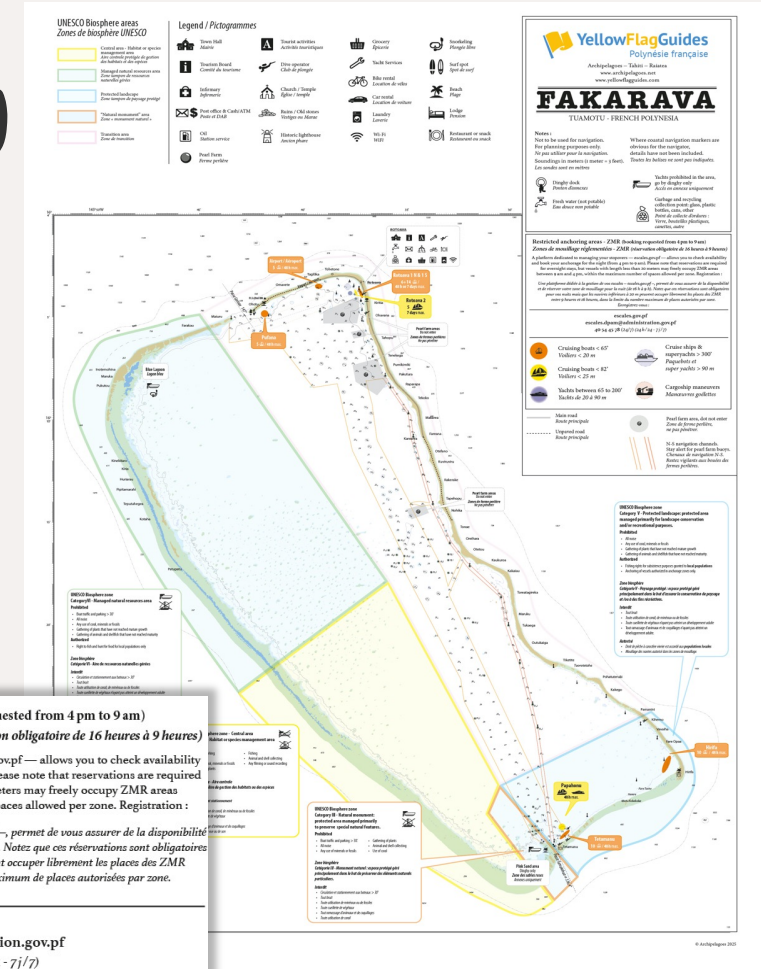
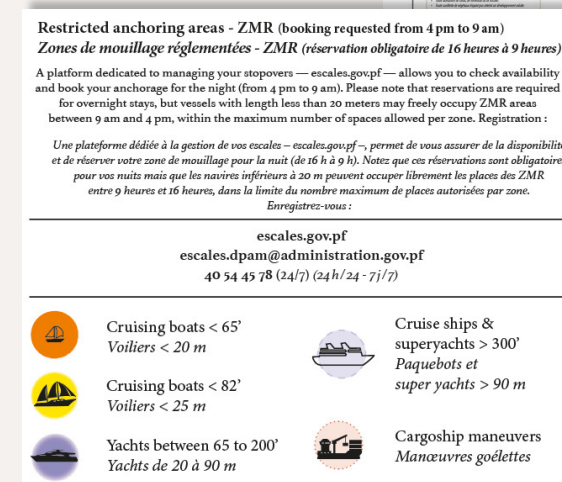
- **Volunteering to transport used batteries** to Tahiti from Fakarava  
[Marguerite VANAA in Fakarava](#)  
– Ph. 87 24 91 87  
[and Stéphanie BETZ in Tahiti](#)  
– Ph. 87 28 08 44
- **Volunteering for educational** activities (school meetings to talk about your travels...) and **environmental** (cleaning and waste collection) via the Tourism Committee – Ph. 89 66 06 56

Visiting these atolls is a privilege. Many resident sailboats inhabit these waters, as well as registered charter boats or those passing through. There are numerous providers of lagoon activities, transport shuttles, and family or professional fishermen.

In consideration of the movement and activity of maritime traffic, the protection of sensitive areas, and respect for resident populations, **regulated anchoring areas** (ZMRs) have been established. The **Polynesian Maritime Affairs Directorate** (DPAM) has imposed a **limit on the number of vessels and length of stay per area**.

**Anchoring information** for these areas is provided for **guidance only**, pending the installation of permanent mooring facilities in 2026.

# Zoning





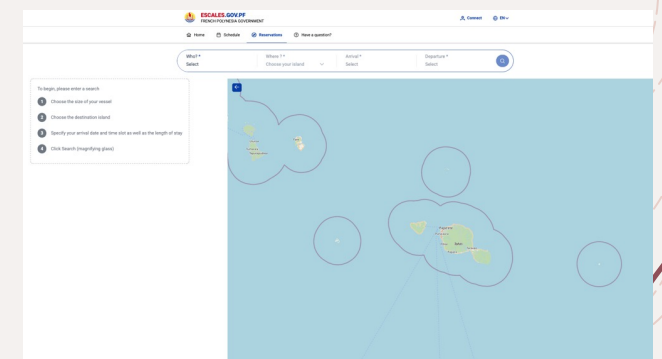
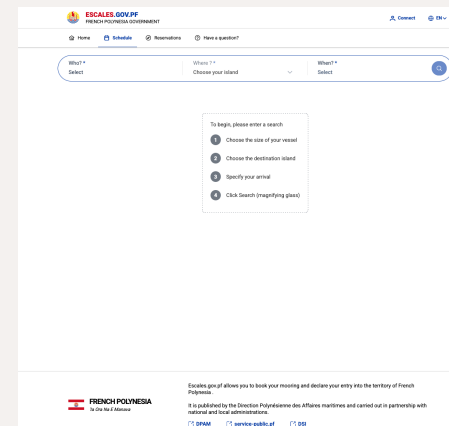
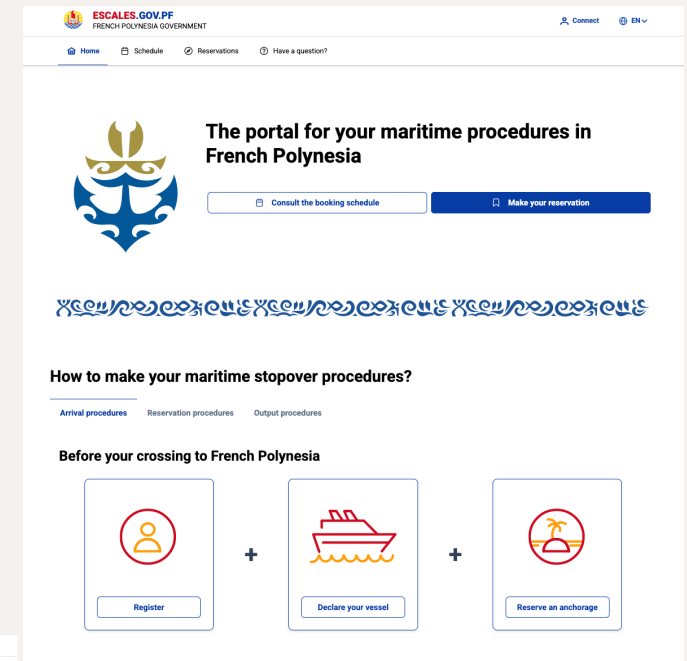
# Pre-book your overnight anchorage

A platform dedicated to manage your stopovers, [www.escales.gov.pf](http://www.escales.gov.pf), allows you to check availability and book your anchorage area in Fakarava for the night (from 4 pm to 9 am):

- ✈ Register at: [escales.gov.pf](http://escales.gov.pf) (the easiest and fastest way)
- ✈ Or send an email to: [escales.dpam@administration.gov.pf](mailto:escales.dpam@administration.gov.pf)
- ✈ Or contact DPAM at 40 54 45 78 (24/7)

This teleservice is in a pilot phase on the islands of Fakarava, Raiatea, Tahaa, Huahine, Moorea and Taiarapu Ouest (Tahiti), and is free of charge, but fees will be charged in 2026.

Please note that reservations are required for **overnight stays** (from 4 pm to 9 am), but vessels under 20 meters in length may freely occupy ZMR spaces **between 9 am and 4 pm**, within the maximum number of spaces allowed per zone.



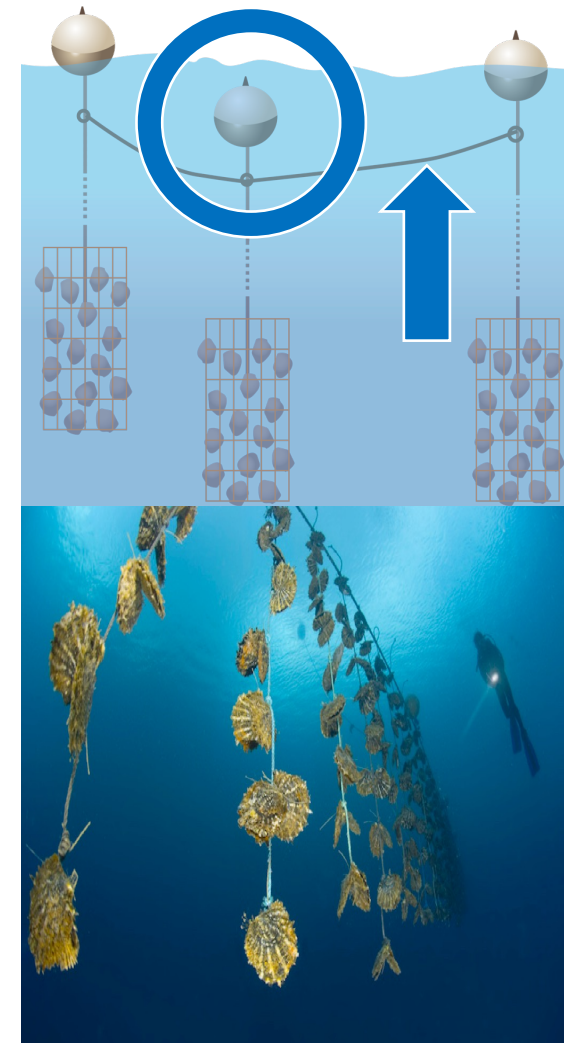
# Let's navigate safely

- ✈ The navigation in the Tuamotu requires vigilance. The atolls are only **visible 10MN away**.
- ✈ Cross the passes at **slack tide**, because with rising or falling tide, the current is stronger (tidal bore possible).
- ✈ In the lagoon **follow the markings** and the channels. For visibility, sail with the sun at its zenith or behind you.
- ✈ **Watch out for pearl farms when you navigate inside the lagoon even in the chennals.**  
The buoys in the areas support submerged ropes to which the pearl oysters are attached.

## Get the tide timetable

- Ephemeris of tides from Shom [maree.shom.fr](http://maree.shom.fr)
- Fakarava Yacht Services [fakayachtservices.com](http://fakayachtservices.com)
- By phone from Fakarava diving clubs

## ✈ Recommandations





# Let's anchor safely

- ✈ Book your mooring through the **escales.gov.pf** platform. Mooring buoys will soon be installed in these 5 areas, but in the meantime when anchoring make sure not to damage the coral heads
- ✈ Choose the anchorage area (based on available places) while avoiding anchoring under the prevailing wind when it is strong.
- ✈ The Fakarava lagoon is oriented NW/SE, it is protected from easterly winds, but very **exposed to southerly winds**
- ✈ The tidal range is reasonable, around 0.5 m to 1 m depending on the tides.

Meteo France available  
**weather.pf**  
or from Fakarava Yacht  
Services

✈ Recommendations



# Let's dive safely

Dive Spirit Fakarava - info@divespirit.com – Ph. 87 32 79 87  
Enata Diving Center - infoenata@gmail.com – Ph. 87 70 15 08  
Kaina Plongée - kainaplongee@hotmail.fr – Ph. 87 22 82 04  
O2 Fakarava - contact@o2fakarava.com – Ph. 87 24 94 94  
Tetamanu Diving - tetamanuvillage@mail.pf – Ph. 87 71 38 34  
Top Dive Fakarava - dive@topdive.com – Ph. 40 53 34 96

🐟 Diving clubs to contact



Two diving spots are very popular: the **South Pass** and the **North Pass**. For security purposes and out of respect, **contact a diving club** to organize yourself according to your level, and at the right time of the tide.

**Limit navigation with dinghies in the passes**, watch out for divers and fishermen.

It is important to **limit the number of groups per day in the passes** so as not to disturb the underwater fauna.

**You should not dive alone in Fakarava**, you must take a diving group guide.





# Sailing and anchorages



## Regulated usages

For security purposes and to preserve the atoll and its population, the entry in the lagoon, navigation and anchorage are submit to obligations.

# Northern pass

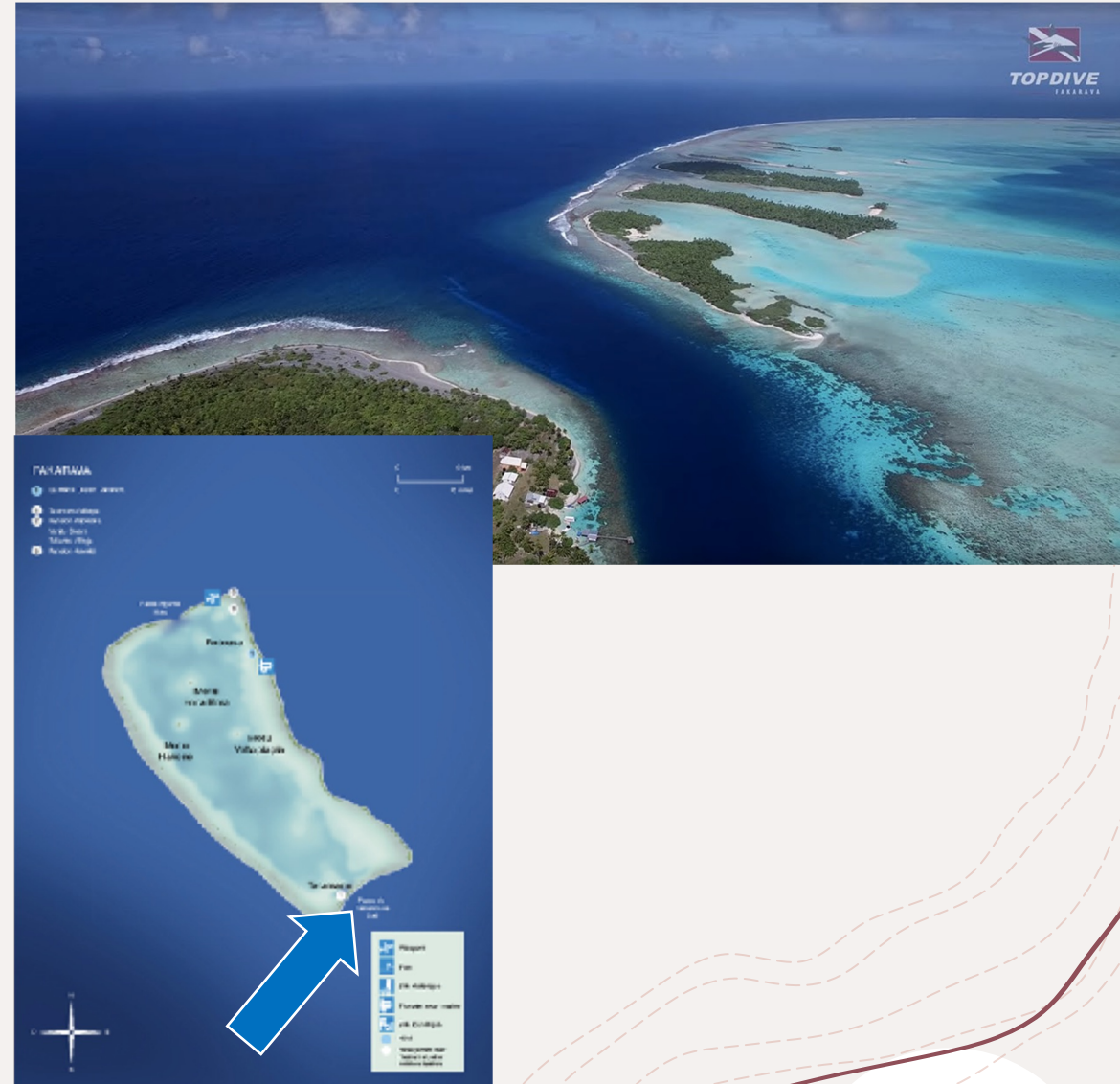
- ✈ Width: 1600 m
- ✈ Depth: 10 m at center
- Green flashing light on the starboard side, visible from 4NM.
- Easily passable except in north winds and if the south swell is strong.
- When there is *maaramu*, SE wind (from June to September), very strong outgoing current (up to 8 kts) and tidal bore
- The incoming current does not exceed 3 Nds.
- Enter with an axis of 147° true for a mile before turning to port, avoiding the *Pufana reef*.
- A beautiful beach on the motu to port when entering the pass





# Southern pass

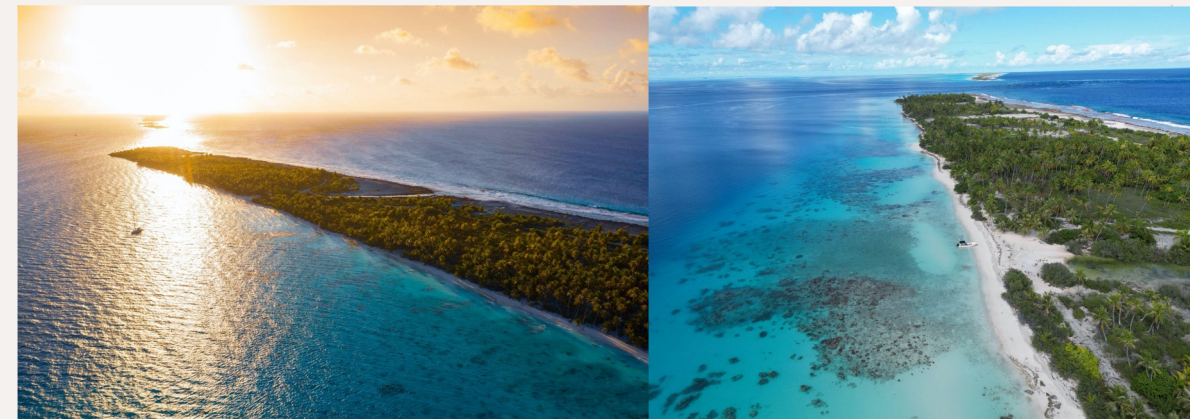
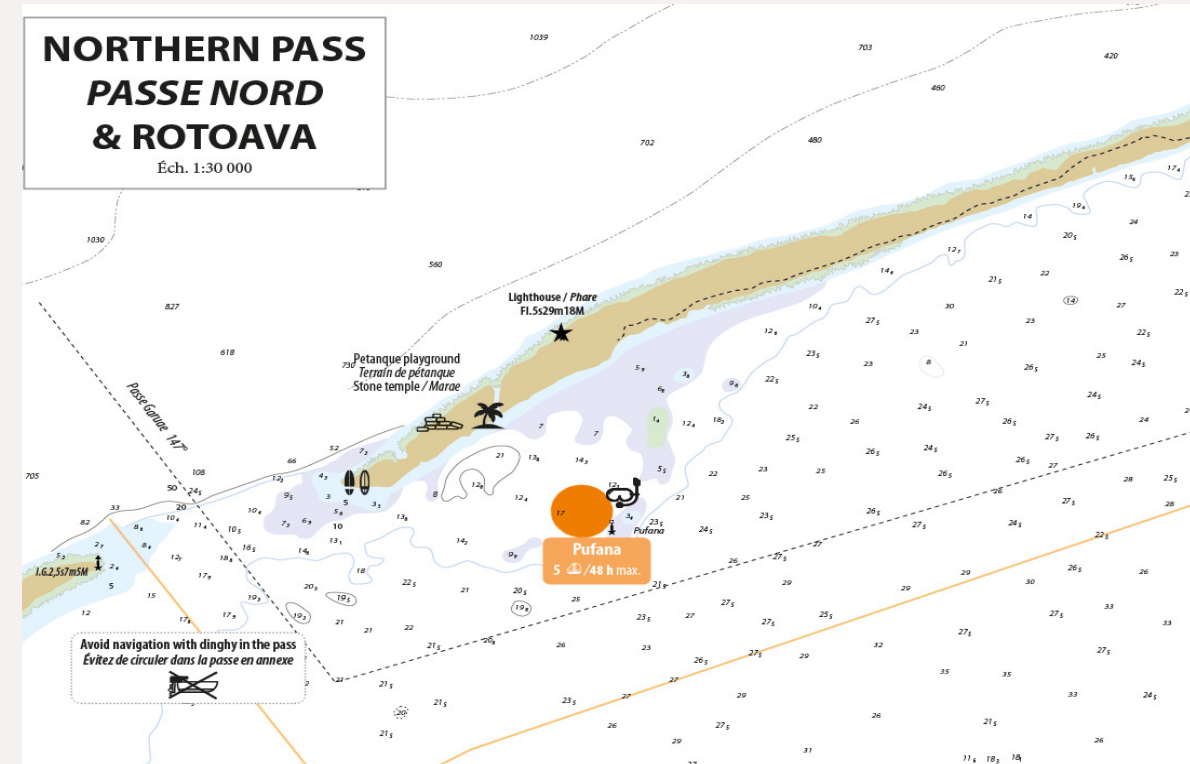
- ✈ Width: 200 m
- ✈ Depth: 12 m (threshold at 4m)
- Moderate current which rarely exceeds 4kts when leaving, except in the event of a strong southerly wind
- Pay attention to the fish park on the side of the **Tetamanu motu**
- Be careful of the moorings in the pass which are used by diving clubs.
- There are **many divers** in this pass: navigate with caution and vigilance.



# Pufana

## North pass anchorage

- ✈ Quota: 5 yachts
- ✈ Duration: 48 hours max.
- Exposed to North wind
- The anchorage area is next to a shoal, which often serves as a diving baptism area, be careful when traveling in a dinghy.
- Snorkeling recommended
- Small public beach, just opposite the anchorage area at PK 9.  
Beach access by dinghy. Weekends BBQ spot for local, petanque court, marae. Possibility to go to the reef side. Access to the village by road from this beach.
- With an island service provider, excursions to the Blue lagoon from this anchorage.







## The Blue Lagoon

- Recommended excursion with a local service provider for a day of immersion. On the menu: Grilled fish, coconut decocking demonstrations, discovery of the motu, and snorkeling.
- A “natural swimming pool”, perfect for beginners and children.
- Ask the Tourism Committee to get the contacts of service providers.



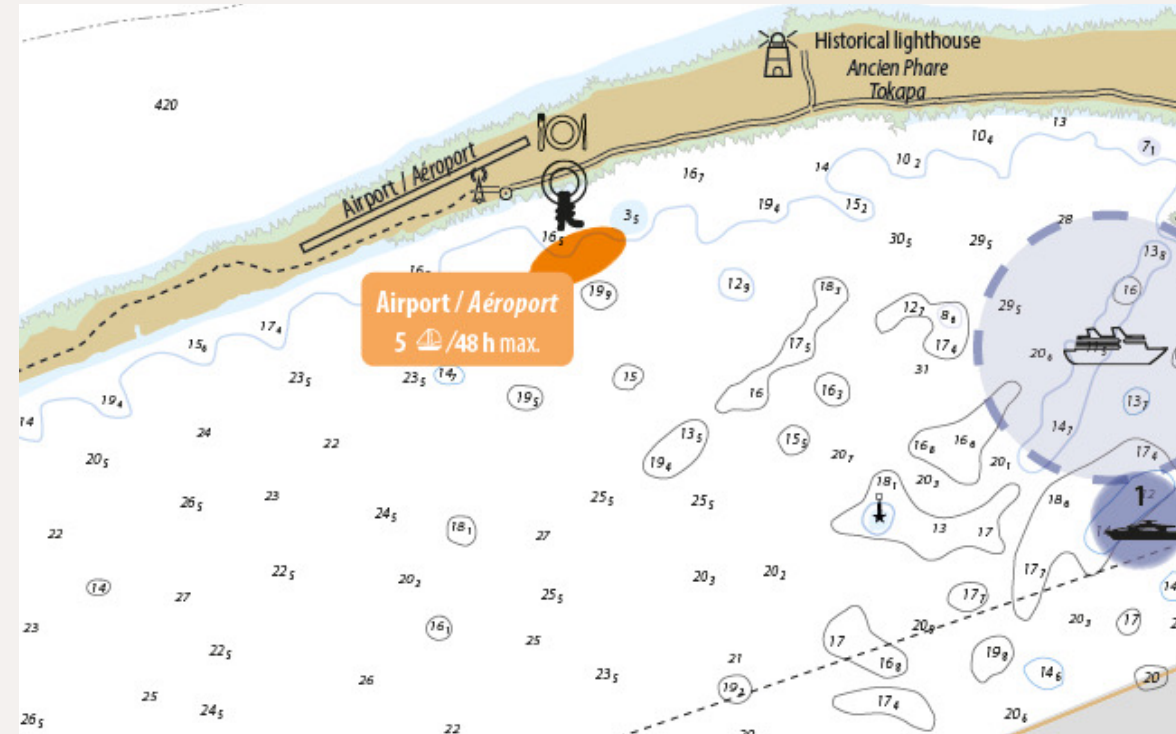
# Airport anchorage

✈ Quota: 5 yachts

✈ Duration: 48 hours max.

Exposed to the North wind.

- Small dock in front of the airport for dinghy access
- Small snack (panini, sandwich) open when there is a flight
- Road from the airport to the village, but also to the pass, great bike ride or walk
- If the quota of sailboats in the regulated anchoring areas (ZMRs) of Rotoava is reached, this area gives you to access to the village by road or by dinghy (less than 2MN)



# Rotoava

## Rotoava 1 N

- Quota: 6 yachts
- Duration: 48 hours max.

## Rotoava 1 S

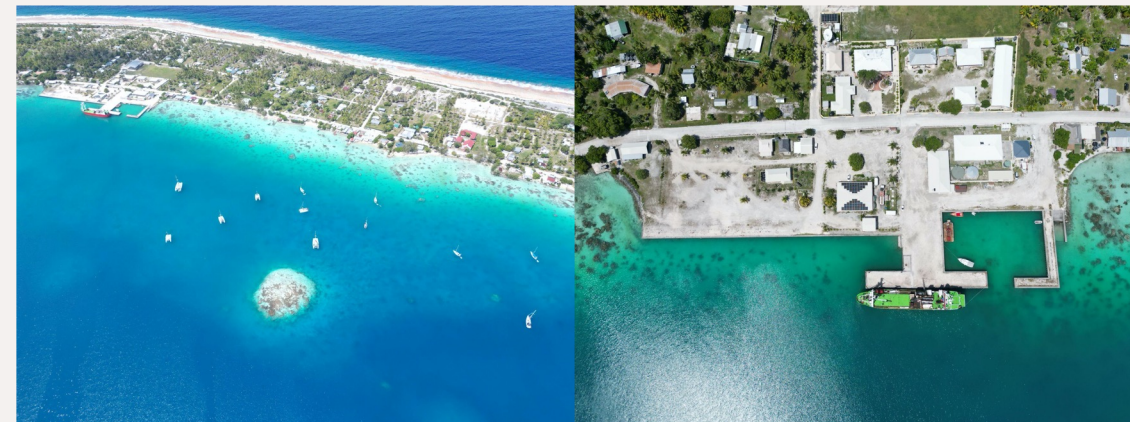
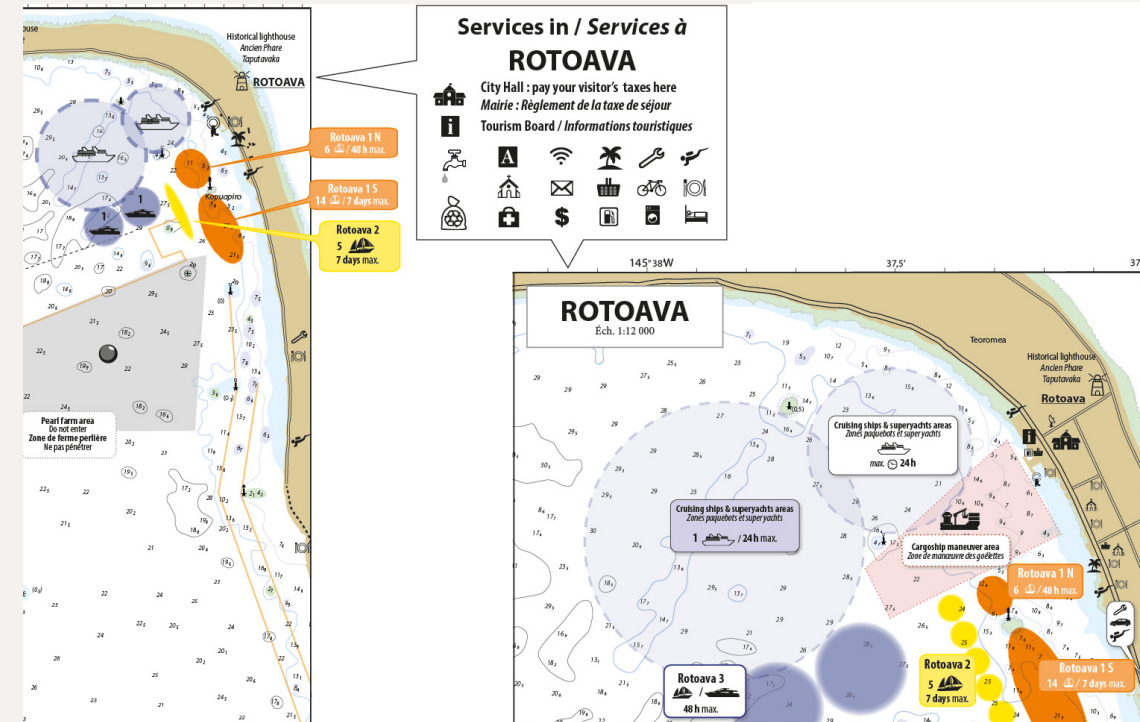
- Quota: 14 yachts
- Duration: 7 days max.

## Rotoava 2

- Quota: 5 superyachts
- Duration: 7 days max.

Well sheltered, except in southerly winds.

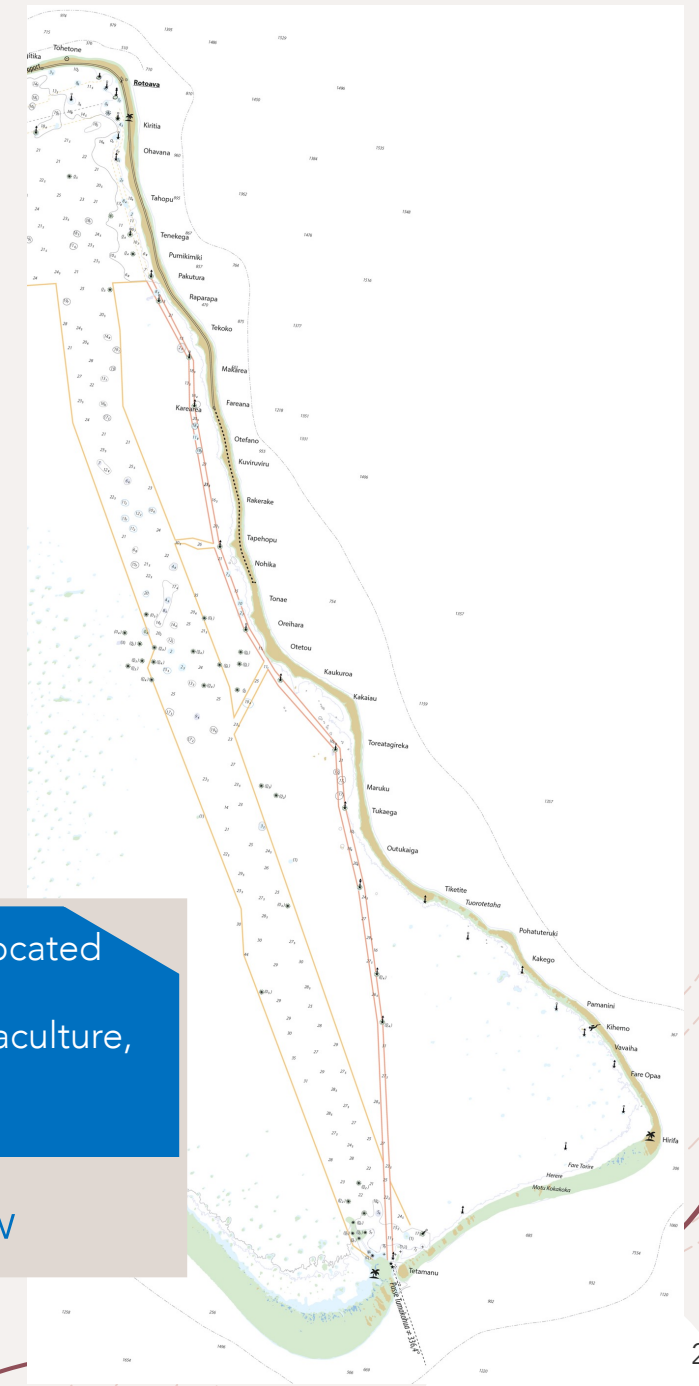
- A dock provides easy access to the village, but small beaches also allow you to go beaching directly in front of the village.
- Alongside mooring at the quay is possible, but make sure not to obstruct the arrival of the schooners, the cruise ship tenders, or the activity providers during cruise ship stopovers.





Distance: 27 NM

- Respect the markings, stay in the channel.
- Outside the channel, significant risks of buoys and submerged lines of pearl farms. The damage will be your responsibility.
- Respecting navigation paths is important.
- Watch out for pearl farms buoys even in the channels.
- Sail with the sun at its zenith or behind you for better visibility.



The other areas are allocated to other uses (fishing, submarine cables, aquaculture, pearl farming, lagoon regeneration, etc.)

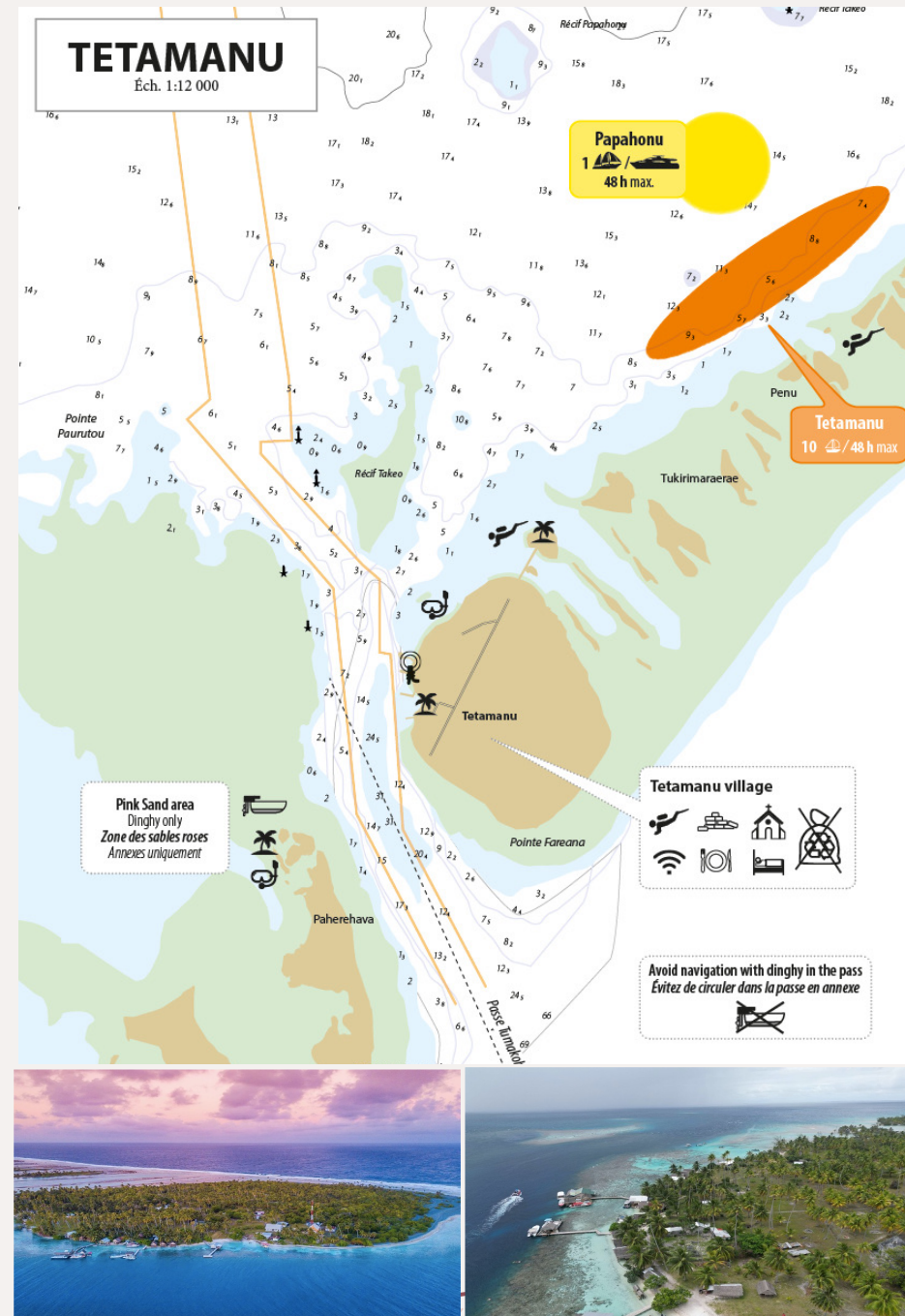
🚩 Good to know

# Tetamanu

✈ Quota: 10 yachts

✈ Duration: 48 hours max.

- Do not go by dinghy in the pass: caution for divers and strong current
- Do not dive without being accompanied by a professional dive center from the island, in order to comply with the number of dive groups allowed per day at this fragile site.
- Do not go to fish parks, they are private properties!
- Do not leave your garbage on shore, keep them until you reach Rotoava or Tahiti. They are only collected in Tetamanu every 6 weeks
- The Catholic church built in 1874 still hosts Sunday services





# Pension Tetamahu Village

- Dinghy dock
- Laundry and internet
- Restaurant with reservation and bar
- 3D model of the South Pass by Laurent Ballesta
- Accompanied snorkeling, with safety boat
- Transfers to Pink Sand beach
- Fish sales





# Pink Sand beach

- ⚓ Anchorage is totally prohibited in this area
- ⚓ Access only by dinghy, or by shuttle boat (several service providers)
- ⚓ Strictly protected area of the Environment Department
- ⚓ Do not leave any trash behind
- ⚓ No camping or fire allowed



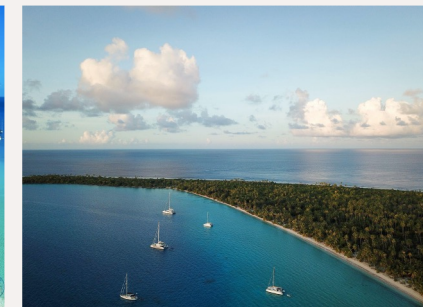
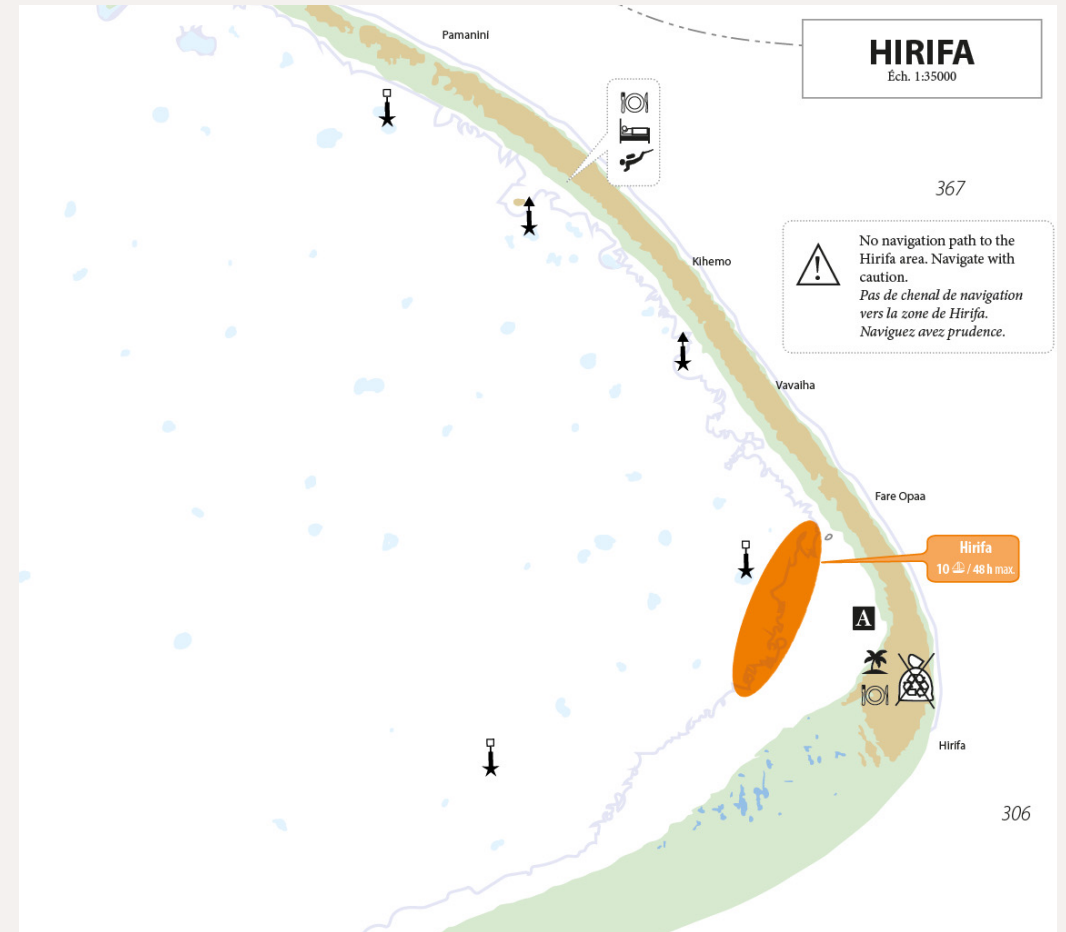
# Hirifa

- Quota: 10 yachts
- Duration: 48 hours max.

Very well sheltered from swell and South to North-East winds, except in West winds. Even through [mara'amu](#), you can stay here peacefully.

Anchoring in 5 to 10 m of water, on a sandy bottom: very few coral heads in this area.

- [The kitesurf wing, foil and wake school](#)  
Adrien and Aline work there from April to October  
– [kitetuamotu.com](http://kitetuamotu.com) – Ph. 87 23 08 45
- [Access to Laïza's Snack](#)  
Book the day before. Open from March to October. No internet, 4G only  
– Ph. 87 79 87 56







## Laiza's snack

Do not leave any trash  
on the motu.

Campfires prohibited.  
Ask permission to have a  
barbecue





## Other atolls nearby



## Toau & Kanehi

If the quota of sailboats is reached in Fakarava, you are invited to sail and visit those neighboring atolls, beautiful and less frequented.



# Toau, Anse Amiot

✈ Distance from Fakarava: 15 MN

**Anse Amiot** is a bay embedded in the barrier, open to the ocean. It looks like a pass but does not give access to the lagoon. The coral reef extends uninterruptedly above water level and closes this magnificent cove.

- 8 moorings, in a depth of 7 to 15 m to avoid damaging the coral garden.
- At anchor, the courant may cause the boat to swing
- A restaurant and a pension are run by the only 3 inhabitants – Ph. 87 33 74 12
- A private fish trap shaped a heart uses the current to channel fish and keep them enclosed.



# At Gaston & Valentine's





# Memorial Laurent Bourgnon

A commemorative stainless plaque reproduce the shape of the trimaran Primagaz, a symbol of the career of this famous sailor, who died in this pass.





# Kauehi anchorages

- ✈ Distance from Fakarava: 31 NM
- The atoll benefits from a wide pass that is navigable in all weather conditions
- Reach the village of [Tearavero](#) by following the markers. [Two anchorage](#) areas in front of the village offer shelter from East and SE winds
- Dinghy dock and several beaches to access to the village.
- Shuttles to the airport are available
- Turn on moorings lights to be visible to the fishermen returning at night
- Do not anchor in front of the airport
- [Go to the Town Hall to pay the tourist tax.](#) Ask for Steven the municipal police officer, he will be pleased to guide you into the village.







# Immersion in the village of Kauehi

- ✈ At [Ruita's house](#), create and weave beautiful hats or buy one
- ✈ At [Rocka's](#), visit her garden filled with fruit and vegetables
- ✈ At [Mama Tutapu's](#), order your local bread the day before
- ✈ To buy fish, ask for Aldo, one of the best fishermen on the island. He will take you fishing or catching *kaveu* (coconut crab)
- ✈ Play a game of *pétanque* (bocce ball) with the locals at the end of the day
- ✈ A [snack bar](#) is open at lunchtime and there are 2 guesthouses, one in the village and the other near the airport. Contact them to make a reservation
- ✈ The [grocery](#) also offers bike rental and a billiard room
- ✈ Snorkeling in front of the village, often with manta rays
- ✈ Old village near the pass: bike ride or go with locals

# We wish you a nice stopover in Fakarava



## Thanks

- Tahiti Tourism
- The Fakarava Tourism Committee
- Fakarava Town Hall
- Kauehi Town Hall
- The Environment Department
- The Polynesian Directorate of Maritime Affairs
- The Equipment Directorate (maritime district)
- Tourism stakeholders from Fakarava, Toau and Kauehi

© Service du tourisme / Archipelagoes SARL • 2025

