

# Ia Orana i Maeva!



## Huahine

Information for yachties



Service  
de  
Tourisme



DPAM

Direction Polynésienne des Affaires Maritimes  
Pū fa'atere'a 'a 'e te fa'atere'a 'a i te mau 'ohiga rau o te moana







# Summary

- 🚤 General information
- 🚤 Practical advice & **recommendations**
- 🚤 Navigating and **anchoring** in Huahine Nui and Huahine Iti





# General information



## Stay alert

Be aware of navigation markers in the lagoons of the Leeward Islands.

Passes are wide and wind is consistent in Huahine, but wind can be affected by the geography of the island.

There is considerable maritime activity and traffic.



# Perfect conditions

The Leeward Islands are located on an amphidromic point, not subject to the lunar tide, only solar.  
 High tide all year round at midday and midnight;  
 Low tide at 6 am and 6 pm.  
 Tide differential of only 20 to 30 cm.

- 🚤 No lunar tidal range; amphidromic point in the south Pacific meaning lower current in the passes.
- 🚤 Easterly trade winds (oriented SE in winter and NE in austral summer).
- 🚤 Sailing in the lagoon protected from the swell by the coral reef.
- 🚤 Well-protected anchorages on lee side of the island.



Weather forecast available at  
[www.meteo.pf](http://www.meteo.pf)

Also announced on **VHF 16** (Society Islands), then broadcast on **VHF 13** at 06:30, 12:00, 16:00, & 20:00. In French.

**HF 8803 kHz**: 07:30, 12:30, 16:30, 20:30

**JRCC** (Joint Rescue Coordination Center)  
 24/7 free phone number: **dial 16** on your mobile phone, or call on **VHF 16**.

**HF 8291 kHz**

🚤 **Weather and Safety**



# Safe sailing

There are many users of the lagoon: maritime shuttles, activity providers, fishermen, inhabitants, yachtsmen... Sail carefully.

**Reminder:** When snorkeling, remember to trail a buoy in order to remain visible.

If you wish to surf in the passes, make sure you have the agreement and goodwill of local surfers.

Trailing a buoy when swimming or snorkeling heightens awareness of your presence in the water, and offers a safety device in case of faintness, fatigue, or drowning. Include a whistle to assist with getting emergency assistance.

🦋 Guidelines





## Specific markings for the Leeward Islands

In the Leeward Islands, a green starboard/red port marker (international system) is located at the entrance of the pass.

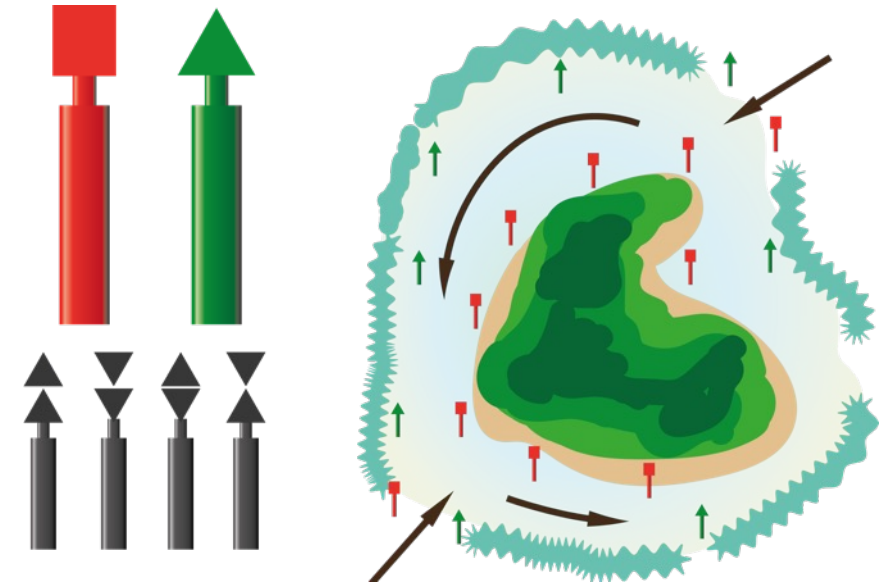
The markings are **different in the lagoon**:  
**green on the reef side** and **red ashore**.

Isolated dangers are identified by cardinal markers.

Huahine navigable passes are usually wide.

The main ones have range markers.

Sailing at night within the lagoon is not recommended as some of the beacons do not have lights.



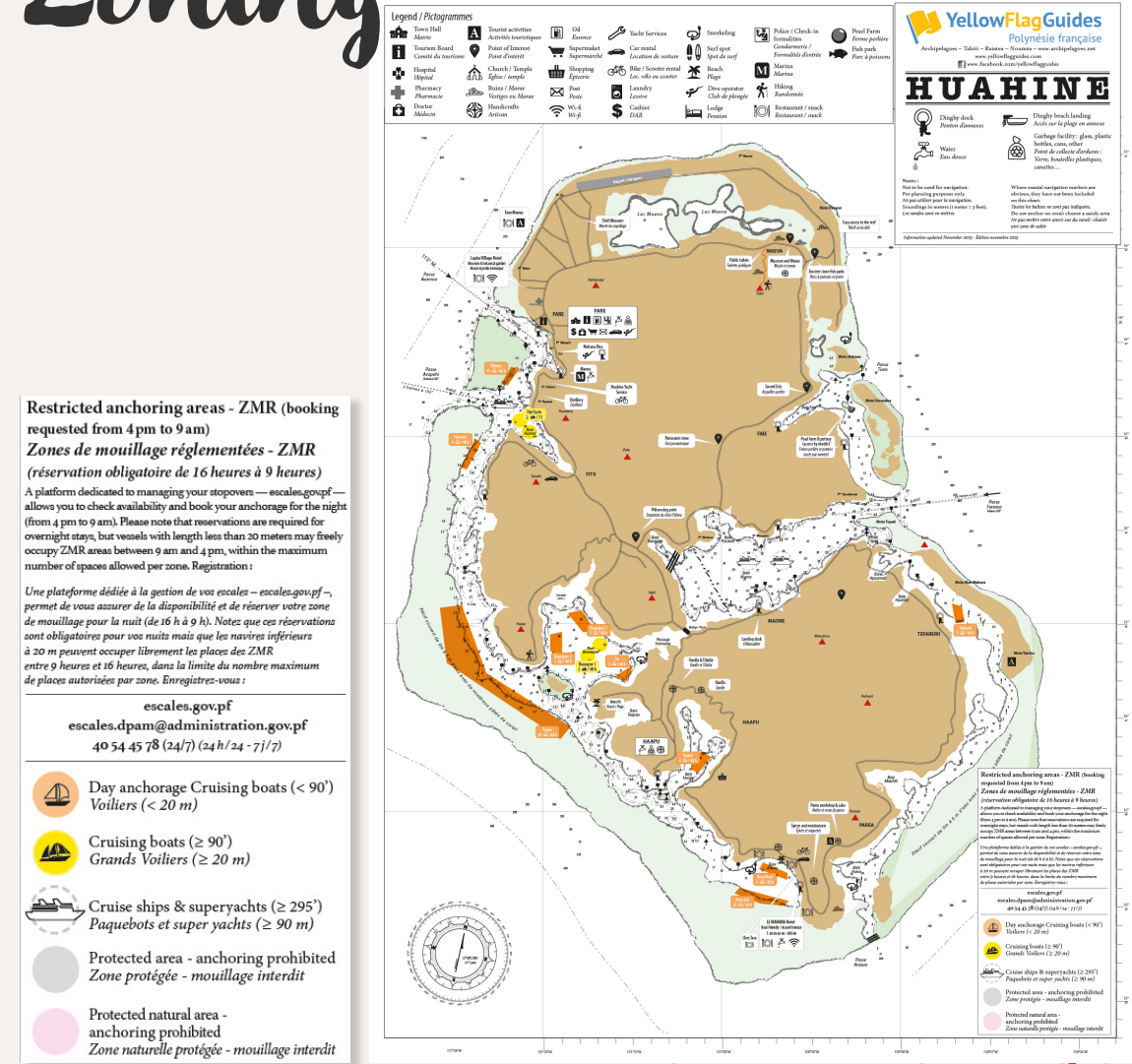


In consideration of the movement and activity of maritime traffic, the protection of **sensitive areas**, and **respect for resident populations**, **regulated anchoring areas** (ZMRs) have been established. The **Polynesian Maritime Affairs Directorate** (DPAM) has imposed a **limit on the number of vessels and length of stay** per area.

Anchoring information for these areas is provided for guidance only, pending the installation of permanent mooring facilities in 2026.

DPAM ambassadors have been appointed for these zones. Their function is to raise awareness of these quota and duration rules and to better quantify usage. Please give them a warm welcome if they visit your vessel.

# Zoning





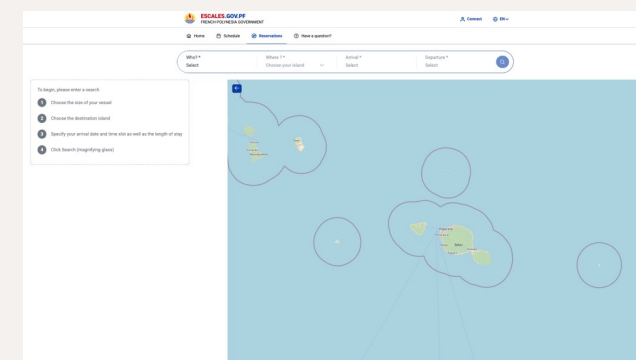
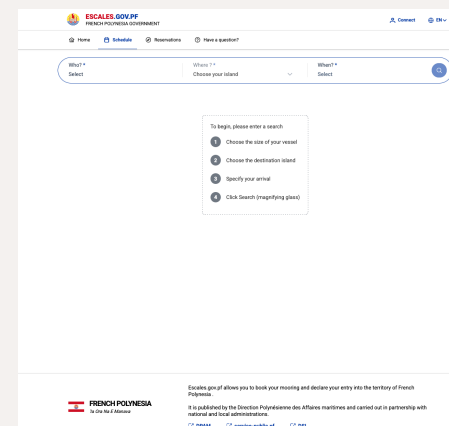
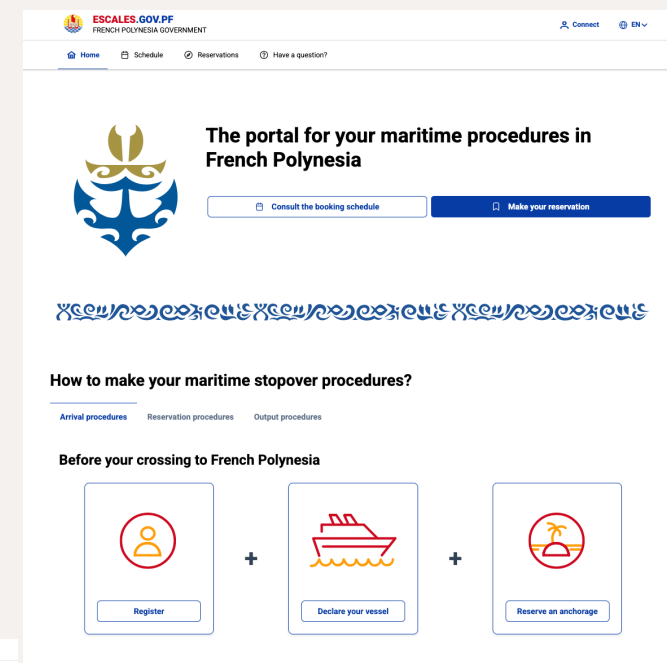
# Pre-book your overnight anchorage

A platform dedicated to manage your stopovers, [escales.gov.pf](https://escales.gov.pf), allows you to check availability and book your anchorage area for the night (from 4 pm to 9 am):

- ✈ Register at: [escales.gov.pf](https://escales.gov.pf)  
(the easiest and fastest way)
- ✈ Or send an email to:  
[escales.dpam@administration.gov.pf](mailto:escales.dpam@administration.gov.pf)
- ✈ Or contact DPAM at **40 54 45 78** (24/7)

This teleservice is in a pilot phase on the islands of Fakarava, Raiatea, Tahaa, Huahine, Moorea and Taiarapu Ouest (Tahiti), and is free of charge, but fees will be charged in 2026.

Please note that reservations are required for **overnight stays** (from 4 p.m. to 9 a.m.), but vessels under 20 meters in length may freely occupy ZMR spaces **between 9 am and 4 pm**, within the maximum number of spaces allowed per zone.





# We must respect

- Regulated **anchorage areas**, quotas and durations
- **No nudity at anchor**, ashore, or even while showering on deck!
- **No illegal AirBnB/chartering** on visiting yachts
- **No underwater lights** at night, so as not to disturb the underwater fauna/wildlife and no strobes on deck or masthead.
- **Peace & quiet for residents** - no noise disturbances

## Safe Snorkeling

- **Refrain for using fins** in shallow areas to avoid damaging the coral.
- Due to heavy traffic in the lagoon, **use a buoy or flag** to indicate your presence at the surface.



- ✦ **No pollution in the lagoons:**  
rubbish, liquid waste, grey water, sunscreen, etc.
- ✦ **No organic waste:**  
it will end up on shore and near houses
- ✦ **Use holding and grey water tanks.**  
Discharge of grey and black water 3 NM offshore.
- ✦ **No unauthorised dumping**  
of household waste on shore.
- ✦ **Do not collect live shellfish**





# Practical tips & guidelines



## Responsible cruisers

Your behaviour is important.

The welcome given to cruisers in the islands, atolls, and motu depends on your ability to adapt and respect the people living there.



# Huahine's Tourism Committee



**M. Moana Tissot**  
President

Ph. 87 72 27 85

For more information  
about Huahine, visit:  
[www.tahititourisme.pf](http://www.tahititourisme.pf)

🏠 Tourism Committee Office

Located at the entrance to the village just behind the craftsmen's fare (house), the Tourism Committee is open on Monday, Tuesday, Thursday, and Friday from 8 am to 4 pm. Run by a team of volunteers, the Tourism Committee provides information about activities available on Huahine.

A visit to their office is recommended for assistance in finding the ideal activity to discover the islands and enjoy your stay to the fullest.



🏝️ Huahine, a variation of the Tahitian word *vahine* (woman), presumably refers to a mountain ridge resembling the outline of a pregnant woman—a symbol of the fertile nature of the island.

# General amenities & services in the village of Fare

- Tourism Committee Office
- Police Station (entry and exit formalities)
- Medical centres and pharmacies
- A large, well-stocked supermarket and numerous small stores
- Fish, fruit, and vegetables are sold every morning on the quay. On Sunday, the produce on offer is even more plentiful, but be there early!
- Restaurants and food trucks
- Several banks, post office
- Airport, Air Tahiti, and Air Moana agencies.

## WASTE MANAGEMENT

You must separate your rubbish into two bags:

- one bag for plastic bottles, cans, glass, tins, etc.
- a separate bag for household waste

Dumpsters are available in Fare, Haapu, and Avea Bay.

The use of grey water tanks is compulsory in the lagoon.

✈ Guidelines





# Yachting services

## In Fare

- 🚤 Floating dock for dinghy access to the village.
- 🚤 **Wharf:** You may berth alongside the quay for just a few hours, but please make sure not to obstruct ferries and local traffic. Visit [DPAM's](#) website to check their schedule.
- 🚤 **Tourism Committee Office:** Huahine maps with information about activities specifically for sailors are available.
- 🚤 **Huahine Yacht Services** can facilitate your stopover: advice and information for yachtsmen; laundry; receiving of parcels/mail; supplies; boat cleaning, boat sitting. Office located in the small bay to the east of Fare (blue bicycle hire container). Access by dinghy from the fishermen's marina - Ph. 87 79 77 59 - [kailearopiteau123@gmail.com](mailto:kailearopiteau123@gmail.com)
- 🚤 **Repairs:** See Marc at restaurant Huahine Yacht Club for advice. He can direct you to the right suppliers - Ph. 87 78 59 05
- 🚤 **2 fuel stations** in Fare, but only by jerry can



# Boating services

## In Haapu

- 🚤 Floating dock to access the village by dinghy
- 🚤 Water (jerry can)
- 🚤 Rubbish collection at the town hall

## In Avea Bay at Mahana Hotel

- 🚤 **Water:** Can be delivered directly to the boat's tanks via the extended hose at the restaurant's pier. Pick up the mooring buoy in front of the pier —berthing is not permitted. Bring the hose to your boat using your dinghy.
- 🚤 Laundry, waste collection
- 🚤 Assistance with booking activities
- 🚤 Access to the hotel restaurant and bar

Haapu dock



Hotel Mahana pier





# Not to be missed...

In each authorised anchoring area, you can request that a rental car or bike be delivered to the quay. A great way to discover Huahine — an island full of treasures and cultural sites.

- ✴ The [Seashell Museum](#) near the airport, where Frank will teach you how to recognise seashells, especially the poisonous ones.
- ✴ The fare pote'e of [Maeva](#), a real architectural treasure with a museum about the history of Huahine's marae.
- ✴ The century-old stone fish traps in the lake in the north and the marae Manumu on the islet [Maeva](#).
- ✴ Discover the marae Anini at [Parea](#).



# Must-do in Huahine

- 🚤 Feed the sacred eels at [Faie](#).
- 🚤 Visit [Peter Owen's pearl farm](#) and pottery in [Faie](#) (maritime shuttle every hour).
- 🚤 Paint your own pareo in one of Huahine Iti's workshops.
- 🚤 Visit a vanilla plantation.
- 🚤 Go hiking with one of the island's guides.
- 🚤 Take a 4WD tour of the island with a guide to discover the most beautiful viewpoints and the legends of Huahine.
- 🚤 Enjoy a Tahitian feast on Sundays at [Tara's](#) in [Avea Bay](#).







# Sailing and anchorages

## Huahine Nui & Huahine Iti



Huahine consists of two islands, [Huahine Nui](#) (the large one) and [Huahine Iti](#) (the small one), linked by [Maroe Bridge](#). According to the legend, the canoe of the god Hiro separated the 2 islands. Please show respect to Huahine's 6,260 inhabitants.

You are invited to discover 11 anchorages - [from north to south](#) - specifically for sailboats and charter boats. Access to Huahine is via the [2 wide passes on the west coast](#), navigable in all conditions and equipped with range markers. Access to the east coast of Huahine is through [Farerea pass](#).



# Ofaïorio

## Fitu

- Quota : 15 yachts
- Duration : 48 h max.
- 2 superyacht areas
- 7 days

This anchorage, located between the 2 northwest passes of Huahine, is well sheltered and offers great snorkeling on the reef side. Shore access by dinghy only:

- via the fishermen's marina in the small bay at the east of the anchorage, giving access to [Huahine's Yacht Services](#), the distillery, and the dive operator. Parking, water and ice are available at the marina.
- or directly to the village of Fare via the floating dock in front of the [Huahine Yacht Club](#)

You can moor your boat for a few hours at the large concrete quay of Fare to buy supplies, but please avoid obstructing ferries & local traffic.

Schedule available on [www.escales.gov.pf](http://www.escales.gov.pf)

- Early Sunday morning market in Fare
- Small but interesting museum with the history of Huahine at Lapita Hotel
- Live band every Friday starting 5:00pm at Huahine Yacht Club
- Dance show at Lapita Hotel on Saturday evenings (only if you dine in)

### Things to Do





# Huamoo

- Quota : 8 yachts
- Duration: 48 h max.

This second anchorage close to the village also provides access to the villages of **Fiti** and **Fare** by dinghy.

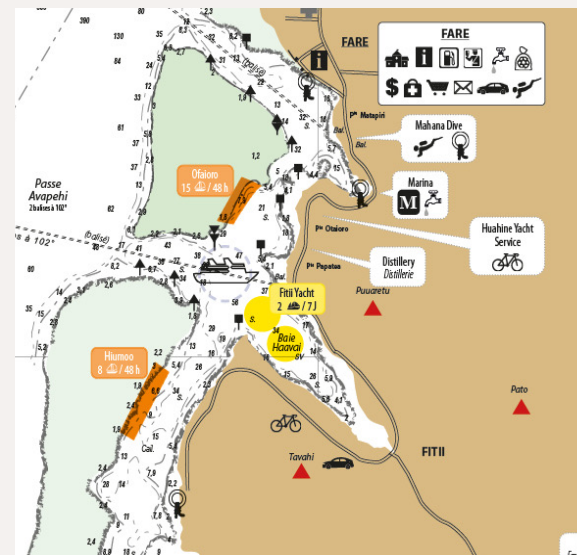
Close to Avepehi pass, this is a perfect anchorage if you wish to set sail early for Raiatea or Tahaa.

There is a fish park near the pass between the 2 green buoys: no fishing in the park!

And, as dolphins often visit this area, you may be treated to one of their shows.

The young people of Huahine love to surf in the pass. If you're surfing too, please kindly ask local surfers for permission.

Surfing in Huahine



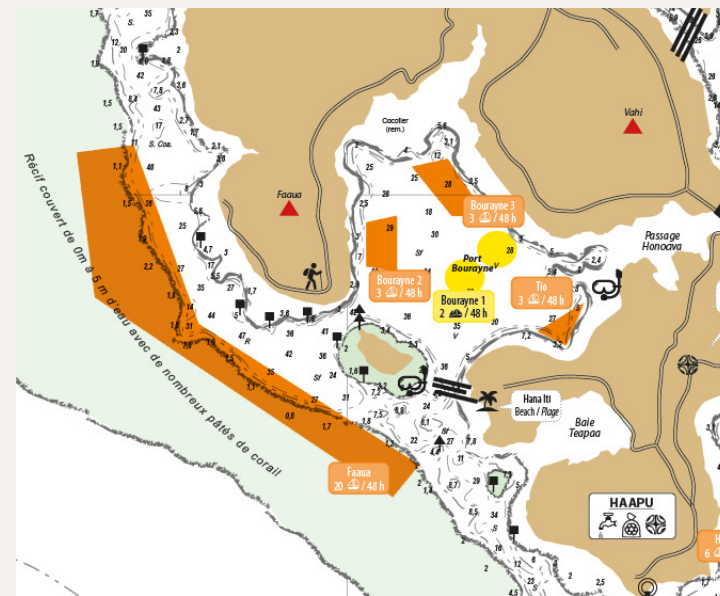
# Faava

- Quota : 20 yachts
- Duration: 48 h max.

Large anchoring area over sand bottom.  
Superb views of Raiatea and the mountains of Huahine.

Opposite this anchorage, there is a beautiful snorkeling area (underwater it says: *'I love Huahine'* with stones):

- Arrive before or after the excursion boats so as not to interfere with them.
- Do not anchor your dinghy; use the available buoys.
- No snorkel fins, no feeding, no collecting.





# Port Bourayne

In this bay, there are three anchorage areas available

## Port Bourayne 2 & 3

- ✴ Quota: 3 yachts / area
- ✴ 1 superyacht area
- ✴ Duration: 48 h max.

## Tio

- ✴ Quota: 2 yachts
- ✴ Duration: 48 h max.

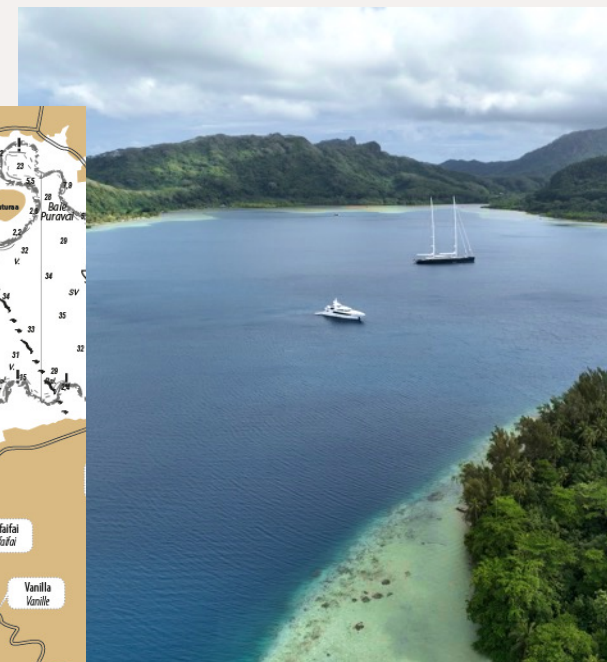
This bay is well sheltered and therefore considered a hurricane hole.

## Activities

Local children love to fish from the **Maroe** bridge, which links *Huahine Nui* to *Huahine Iti*.

A small quay close to zone Bourayne 2 provides shore access via dinghy. There are no shops nearby, but you can request a car or electric bike to be delivered to explore the bay.

Take a walk to discover 'Dog Piihiro's paw': the story is in French (ask your browser for translation) on: [www.tahitiheritage.pf/empreinte-patte-chien](http://www.tahitiheritage.pf/empreinte-patte-chien)



# The beautiful beach of Hana iti

No anchorage: use one of the moorings in front of the beach; if they are already in use, anchor at Faaua and go by dinghy.

Meet with Siki, the « guardian ». If you ask, this very kind man may allow you to:

- Have a barbecue or a picnic
- Pick some flowers along the footpath leading to a beautiful viewpoint (30 mins)

If you bring 2 kg of flour and yeast, Siki will bake *Ipo* (Polynesian coconut bread) for you.

Cultural events or activities can be organised for groups with the cooperation of the [Haapu](#) environmental association (see contact next page).

## Contact Siki

Ph. 87 25 54 49

Before 6 am or after 6 pm

 [Contact Information](#)





# Haapu

- Quota : 6 yachts
- Duration: 48 h max.

A well-protected bay with a mud bottom.

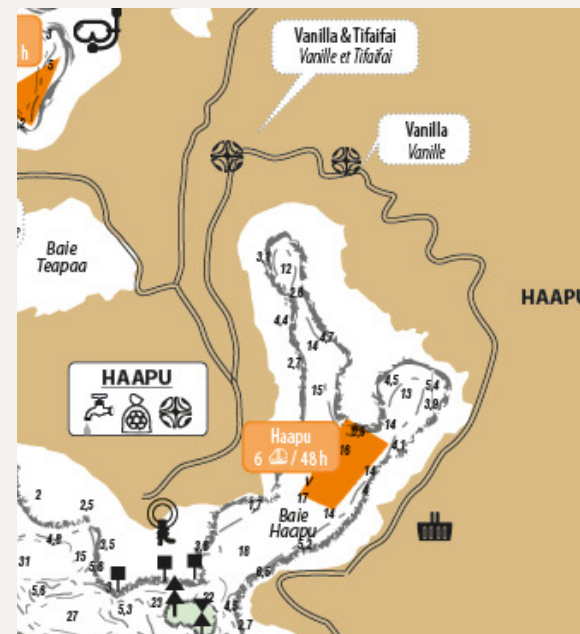
The village of Haapu is very traditional. Discover the peaceful atmosphere of a typical Huahine village, with its 600 inhabitants, 5 churches and a small school.

- Use the floating dinghy dock to go ashore
- Water and trash disposal at the Town Hall (green and grey bins)
- Small grocery
- Several vanilla plantations, including one that was awarded for quality
- A tifaifai (hand-sewn quilt - ancestral Polynesian art) workshop
- Bicycle or scooter hire (for a nice tour of the bay)

If you wish to help preserve the island, contact the environmental protection association **Paruru te Tainoto O Haapu**

President Gilbert Pitori - Ph. 87 21 51 38  
or Herenui Aa - Ph. 87 22 72 98

 Recommendation / interactions





# Avea North & Avea South

- ✈ Quota : 5 yachts
- ✈ Duration: 48 h max.
- ✈ Quota : 10 yachts
- ✈ Duration: 48 h max.

Dinghy to the beach or use [Hôtel Le Mahana](#) pier:

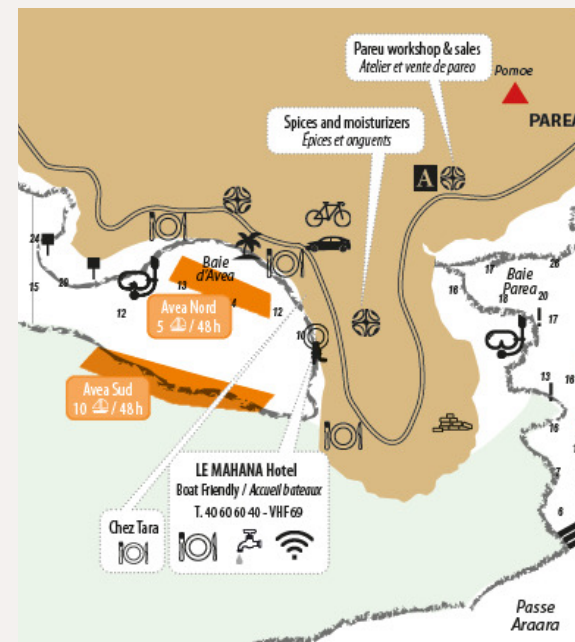
- Water is available directly in front of the hotel (use the mooring buoy in front of the pier and use your dinghy to bring the water hose to your boat): 2,000 Fcp per fill in 2025.
- Sorted trash collection
- Laundry
- Dinner with dance show every Thursday evening
- Excursion desk

## In the vicinity

- Several handicraft shops
- Three seafront snack bars/grills
- Car rental
- Small grocery

## Things to do

- Big game fishing with Huahine Secret Tour – Ph. 89 23 53 82
- Walk to marae Anini
- Hike on the mountain (45 minutes round trip)
- Several snorkeling sites in the south pass (dinghy to the motu)





# Tefarerü

or Tefare Arii, the ancient name meaning the house of gods

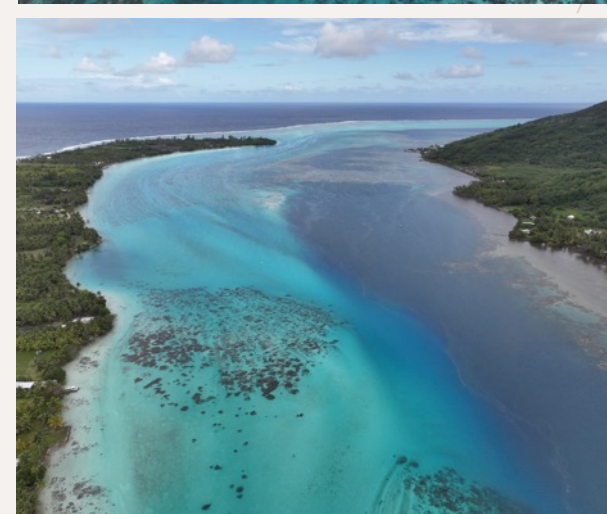
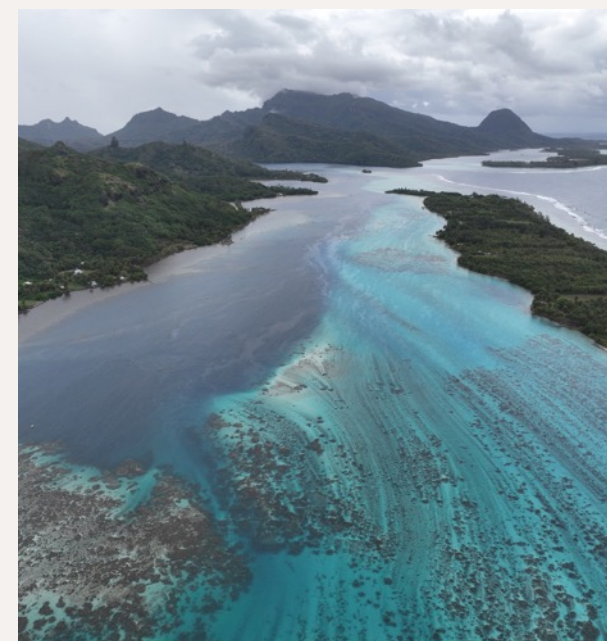
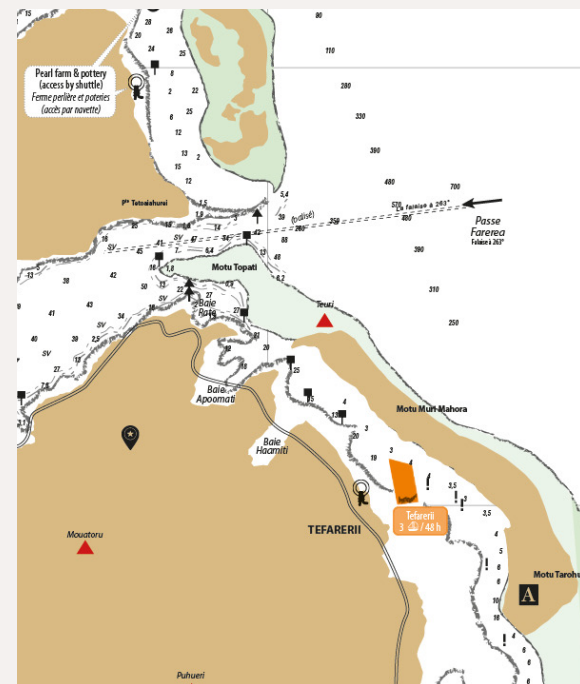
- Quota : 3 yachts
- Duration: 48 h max.

**East Huahine.** To access this anchorage (sandy bottom), you must leave the lagoon and re-enter through the **Farerea pass** on the east side of Huahine.

## What's there:

- A marina for dinghies only
- A dock for shore access
- A magnificent snorkeling area. **Warning: remember to trail a buoy when swimming or snorkeling**, as many excursion boats use this channel.

On the beach at the end of the large motu, a barbecue with cultural entertainment is organised every day at lunchtime. Sailors are welcome to join from noon to 2.30pm by reservation at **Huahine Nautique** - Ph. 87 78 59 05





Continue discovering the Leewards  
.. or Winwards

## SOCIETY Archipelago



## Raiatea, Tahaa... or Tahiti and Moorea

Sail downwind to the **west** towards the islands of **Raiatea** and **Tahaa**,  
or head **southeast** for an overnight sail to **Moorea** and **Tahiti**.

Download the information briefings and the charts of Raiatea and Tahaa for cruisers from the  
Tourism Department's website: [www.service-public.pf/sdt/plaisance-responsible](http://www.service-public.pf/sdt/plaisance-responsible)



# We wish you a nice stopover in Huahine



## Thanks to

- The Tourism Committee of Huahine
- The Mayor of Huahine and the deputy mayors of the island's associated communes
- The Polynesian Maritime Affairs Department
- Huahine's environmental protection associations
- The tourism stakeholders of Huahine



© Service du tourisme / Archipelagoes SARL • 2025

